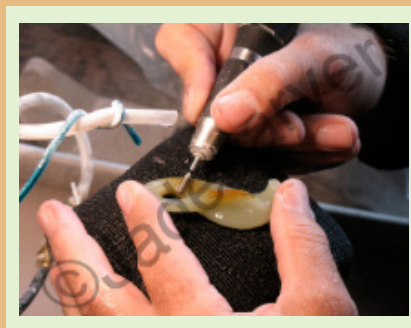


# Jadecarver.com

## 2023 Diamond Tools Catalog



**Diamond Tools**  
**Diamond Paste**  
**Micromotors**

**Tools for Stone, Glass, Jewelry,  
Knife & Industrial Applications**

# Welcome to the Jadecarver.com Tools Catalog

## Our Products:

We are jade carvers and use the products we sell. We custom design many of our products that are manufactured for us by factories in the US, Canada, Europe and China. These factories make many of these tools to our specifications and tolerances from our CAD drawings. This is why many of our tools are unique and durable. Contact us for information regarding large quantity custom tool designs.

**We reserve the right to change the specifications, dimensions, design and pricing of our products without notice.**

## Ordering, Shipping and Payment Information:

**USA Customers** can order directly from our web site or call us. Payment by Credit Card or PayPal.

**International customers** call us or send an email detailing the products wanted. We will then provide shipping options and pricing. Payment by PayPal or wire transfer.

## Returns:

Most items may be returned within 7 days of your receiving the product as long as the item has not been installed or used and is returned in its new original packaging. Special orders are not returnable.

Motorized devices are not returnable (utilize factory warranty for repairs). Diamond cloth, diamond pads and diamond paste are not returnable (we cannot take a chance that they have been contaminated and sold to another customer).

Your satisfaction is important to us. Should you encounter a problem with any of our products please contact us.

## Caution: Safety Issues:

**Always wear eye, body and face protection when using power tools to prevent serious injury.**

Use a respirator and dust collection system to prevent inhaling dust, abrasives, grinding and polishing compounds or other debris.

Use ear protection when operating motorized devices.

Operate within speed ratings for rotary tools. Failure to do so may result in damage to the equipment and/or serious personal injury.

**When using motorized devices, especially micromotors, follow manufacturers instructions.** Turn the motorized device on at a low speed and then adjust to the desired operating speed. Do not exceed the maximum speed ratings for each rotary tool being used. Failure to do so may result in damage to the equipment and/or serious personal injury.

## Shows:

See us in person at shows. Refer to our web site for show dates listed on the **Events** link.

Visit us in Room 122 at the **Pueblo Gem Show January 26 through February 7, 2023** at:

The Ramada by Wyndham (formally known as the River Park Inn)  
777 W Cushing St, Tucson, Arizona

## Contact Information:

**Gems & Jade**

Concord, California, USA

**Telephone:** (925) 689-8840

**International:** +1-925-689-8840

**Email:** jadecarver@jadecarver.com

**Web:** www.jadecarver.com

Thank you for using our products,

*David R. Clayton*

*Jadecarver*



# Diamond Tool Product Index

Welcome .....	Page 2
Index.....	Page 3
Flat Grinding Wheels.....	Page 4
V Grinding Wheels.....	Page 5
Convex Grinding Wheels .....	Page 6
Concave Grinding Wheels .....	Page 7
Bushings for Grinding Wheels .....	Page 7
Burr Sets.....	Pages 8 & 9
Burrs .....	Pages 10, 11, 12 & 13
Burrs, Sintered .....	Page 13
Drills .....	Page 14
Files and Rod Sets.....	Page 15
Flat Laps.....	Page 16
Diamond Paste.....	Page 17
Felt Bobs .....	Page 18
2" Diamond Pads .....	Page 19
Diamond Cloth.....	Page 19
Silicon Carbide Blocks.....	Page 20
NSK High Torque Micromotor.....	Page 21
Foredom Flex Shaft Motors and Accessories.....	Page 22
Grinding, Polishing and Safety Tips.....	Page 23

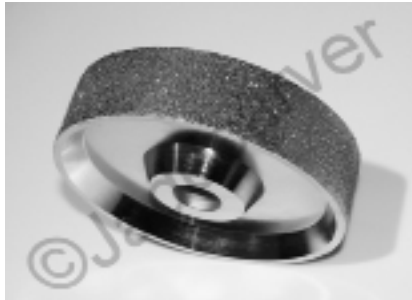
---

# Flat Diamond Grinding Wheels

## High quality nickel plated diamond grinding wheels

These wheels have a 1 inch hole. Bushings are available to adapt the wheels to 1/2", 5/8" and 3/4" arbors.

Please specify when you order if you need bushings (see page 7).



8"x1-1/2"	Steel Core, Flat
Part Number	8x1.5SFlat
Max Speed:	2,400rpm
36 grit	\$199.50
80 grit	169.50
120 grit	157.50
220 grit	142.50
400 grit	142.50
600 grit	142.50



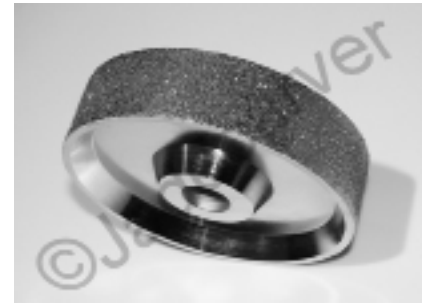
6"x1"	Steel Core, Flat
Part Number	6x1SFlat
Max Speed:	2,400rpm
36 grit	\$123.50
60 grit	118.50
80 grit	102.50
120 grit	88.50
220 grit	78.50
400 grit	78.50
600 grit	78.50



6"x2-1/2"	Steel Core, Flat
Part Number	6x2.5SFlat
Max Speed:	2,400rpm
36 grit	\$210.50
80 grit	199.50
120 grit	184.50
220 grit	169.50



4"x1-1/2"	Steel Core, Flat
Part Number	4x1.5SFlat
Max Speed:	2,400rpm
80 grit	\$89.50
120 grit	79.50
220 grit	72.50
400 grit	72.50
600 grit	72.50



6"x1-1/2"	Steel Core, Flat
Part Number	6x1.5SFlat
Max Speed:	2,400rpm
36 grit	\$146.50
60 grit	141.50
80 grit	139.50
120 grit	129.50
220 grit	109.50
400 grit	109.50
600 grit	109.50

# V Diamond Grinding Wheels

## High quality nickel plated diamond grinding wheels

These wheels have a 1 inch hole. Bushings are available to adapt the wheels to 1/2", 5/8" and 3/4" arbors. Please specify when you order if you need bushings (see page 7).



6"x1", Steel	60 Degree V
Part Number	6x1SV
Max Speed:	2,400rpm
80 grit	\$85.50
120 grit	79.50
220 grit	73.50
400 grit	73.50
600 grit	73.50



4"x1/2", Steel	30 Degree V
Part Number	4x.5SV
Max Speed:	2,400rpm
80 grit	\$51.50
120 grit	46.50
220 grit	41.50
400 grit	41.50
600 grit	41.50

# Convex Diamond Grinding Wheels

## High quality nickel plated diamond grinding wheels

These wheels have a 1 inch hole. Bushings are available to adapt the wheels to 1/2", 5/8" and 3/4" arbors. Please specify when you order if you need bushings (see page 7).



<b>6"x1-1/2"</b>	<b>Convex</b>
<b>Part Number</b>	<b>6x1.5SVex</b>
<b>Max Speed:</b>	<b>2,400rpm</b>
<b>50 grit</b>	<b>\$141.50</b>
<b>80 grit</b>	<b>139.50</b>
<b>120 grit</b>	<b>129.50</b>
<b>220 grit</b>	<b>109.50</b>
<b>400 grit</b>	<b>109.50</b>
<b>600 grit</b>	<b>109.50</b>



<b>6"x1"</b>	<b>Convex</b>
<b>Part Number</b>	<b>6x1SVex</b>
<b>Max Speed:</b>	<b>2,400rpm</b>
<b>50 grit</b>	<b>\$118.50</b>
<b>80 grit</b>	<b>102.50</b>
<b>120 grit</b>	<b>88.50</b>
<b>220 grit</b>	<b>78.50</b>
<b>400 grit</b>	<b>78.50</b>
<b>600 grit</b>	<b>78.50</b>



<b>6"x1/2"</b>	<b>Convex</b>
<b>Part Number</b>	<b>6x.5SVex</b>
<b>Max Speed:</b>	<b>2,400rpm</b>
<b>50 grit</b>	<b>\$74.50</b>
<b>80 grit</b>	<b>69.50</b>
<b>120 grit</b>	<b>66.50</b>
<b>220 grit</b>	<b>64.50</b>
<b>400 grit</b>	<b>64.50</b>
<b>600 grit</b>	<b>64.50</b>



<b>6"x1/4"</b>	<b>Convex</b>
<b>Part Number</b>	<b>6x.25SVex</b>
<b>Max Speed:</b>	<b>2,400rpm</b>
<b>50 grit</b>	<b>\$58.50</b>
<b>80 grit</b>	<b>53.50</b>
<b>120 grit</b>	<b>49.50</b>
<b>220 grit</b>	<b>47.50</b>
<b>400 grit</b>	<b>47.50</b>
<b>600 grit</b>	<b>47.50</b>



<b>4"x1/2"</b>	<b>Convex</b>
<b>Part Number</b>	<b>4x.5SVex</b>
<b>Max Speed:</b>	<b>2,400rpm</b>
<b>80 grit</b>	<b>\$47.50</b>
<b>120 grit</b>	<b>43.50</b>
<b>220 grit</b>	<b>41.50</b>
<b>400 grit</b>	<b>41.50</b>
<b>600 grit</b>	<b>41.50</b>



<b>4"x1/4"</b>	<b>Convex</b>
<b>Part Number</b>	<b>4x.25SVex</b>
<b>Max Speed:</b>	<b>2,400rpm</b>
<b>80 grit</b>	<b>\$44.50</b>
<b>120 grit</b>	<b>39.50</b>
<b>220 grit</b>	<b>37.50</b>
<b>400 grit</b>	<b>37.50</b>
<b>600 grit</b>	<b>37.50</b>



# Concave Diamond Grinding Wheels

## High quality nickel plated diamond grinding wheels

These wheels have a 1 inch hole. Bushings are available to adapt the wheels to 1/2", 5/8" and 3/4" arbors. Please specify when you order if you need bushings (see below).



6"x1-1/2"	Concave
Part Number	6x1.5SCave
Max Speed:	2,400rpm
80 grit	\$139.50
120 grit	129.50
220 grit	109.50
400 grit	109.50
600 grit	109.50



6"x1"	Concave
Part Number	6x1SCave
Max Speed:	2,400rpm
80 grit	\$102.50
120 grit	88.50
220 grit	78.50
400 grit	78.50
600 grit	78.50



4"x1/2"	Concave
Part Number	4x.5SCave
Max Speed:	2,400rpm
80 grit	\$47.50
120 grit	43.50
220 grit	41.50
400 grit	41.50
600 grit	41.50

## Bushings



Bushings	
Part Number	Bushing
1/4 inch wide	\$2.50
1/2 inch wide	2.50
3/4 inch wide *	2.50
1 inch wide	2.50

The outside diameter of the bushings are 1 inch and fit all of our wheels.

All bushings telescope to fit 1/2", 5/8" or 3/4" arbors.

\*For wheels that are 1-1/2" wide, use 2 of the 3/4 inch bushings.

# Diamond Burr Sets

High quality nickel plated diamond burrs



<b>50pc Set, Lg</b>	<b>1/8" Shaft</b>
<b>Part Number</b>	<b>BS50pcL</b>
<b>Max Speed:</b>	<b>35,000rpm</b>
<b>36 grit</b>	<b>\$33.50</b>
<b>80 grit</b>	<b>31.50</b>
<b>120 grit</b>	<b>29.90</b>
<b>220 grit</b>	<b>29.90</b>



<b>50pc Set, Sm</b>	<b>1/8" Shaft</b>
<b>Part Number</b>	<b>BS50pcS</b>
<b>Max Speed:</b>	<b>40,000rpm</b>
<b>36 grit</b>	<b>\$24.00</b>
<b>80 grit</b>	<b>20.50</b>
<b>120 grit</b>	<b>19.50</b>
<b>220 grit</b>	<b>19.50</b>



<b>30pc Set</b>	<b>1/8" Shaft</b>
<b>Part Number</b>	<b>BS30pc</b>
<b>Max Speed:</b>	<b>40,000rpm</b>
<b>36 grit</b>	<b>\$14.00</b>
<b>80 grit</b>	<b>13.00</b>
<b>120 grit</b>	<b>12.00</b>
<b>220 grit</b>	<b>12.00</b>
<b>400 grit</b>	<b>12.00</b>
<b>600 grit</b>	<b>12.00</b>



<b>Ball Burr Set</b>	<b>1/8" Shaft</b>
<b>2mm - 15mm</b>	<b>14pc Set</b>
<b>Part Number</b>	<b>BBS14pc</b>
<b>Max Speed:</b>	<b>40,000rpm</b>
<b>36 grit</b>	<b>\$32.50</b>
<b>80 grit</b>	<b>29.50</b>
<b>120 grit</b>	<b>28.50</b>
<b>220 grit</b>	<b>28.50</b>
<b>400 grit</b>	<b>28.50</b>
<b>600 grit</b>	<b>28.50</b>



# Diamond Burr Sets

High quality nickel plated diamond burrs



<b>V Burr Set</b>	<b>1/8" Shaft</b>
<b>19mm OD</b>	<b>3pc Set</b>
<b>Part Number</b>	<b>VBS3pc</b>
<b>Max Speed:</b>	<b>16,000rpm</b>
<b>80 grit</b>	<b>\$21.00</b>
<b>120 grit</b>	<b>21.00</b>
<b>220 grit</b>	<b>21.00</b>
<b>400 grit</b>	<b>21.00</b>



<b>Radius Burr Set</b>	<b>1/8" Shaft</b>
<b>To Radius Holes</b>	<b>4pc Set</b>
<b>Part Number</b>	<b>RadiusBS</b>
<b>Max Speed:</b>	<b>18,000rpm</b>
<b>80 grit</b>	<b>\$28.00</b>
<b>120 grit</b>	<b>28.00</b>
<b>220 grit</b>	<b>28.00</b>
<b>400 grit</b>	<b>28.00</b>



<b>Cup Set, Small</b>	<b>1/8" Shaft</b>
<b>2-10mm, OD</b>	<b>9pc Set</b>
<b>Part Number</b>	<b>CupBSS9pc</b>
<b>Max Speed:</b>	<b>18,000rpm</b>
<b>120 grit</b>	<b>\$23.90</b>
<b>220 grit</b>	<b>23.90</b>
<b>400 grit</b>	<b>23.90</b>



<b>V Burr Set</b>	<b>3/32" Shaft</b>
<b>4, 6, 8, 10mm OD</b>	<b>8pc Set</b>
<b>Part Number</b>	<b>VBS8pc</b>
<b>Max Speed:</b>	<b>18,000rpm</b>
<b>120 grit</b>	<b>\$29.00</b>
<b>220 grit</b>	<b>29.00</b>
<b>400 grit</b>	<b>29.00</b>

# Diamond Burrs

High quality nickel plated diamond burrs



<b>Tire Burr</b>	<b>1/4" Shaft</b>
<b>1.5" D x 1/2"W</b>	<b>38mm x 13mm</b>
<b>Part Number</b>	<b>TB38X13</b>
<b>Max Speed:</b>	<b>18,000rpm</b>
<b>36 grit</b>	<b>\$37.00</b>
<b>80 grit</b>	<b>35.00</b>
<b>120 grit</b>	<b>33.00</b>
<b>220 grit</b>	<b>33.00</b>
<b>400 grit</b>	<b>33.00</b>
<b>600 grit</b>	<b>33.00</b>



<b>Tire Burr</b>	<b>1/4" Shaft</b>
<b>1.5"D x 1/4"W</b>	<b>38mm x 6mm</b>
<b>Part Number</b>	<b>TB38X6</b>
<b>Max Speed:</b>	<b>18,000rpm</b>
<b>36 grit</b>	<b>\$29.00</b>
<b>80 grit</b>	<b>27.00</b>
<b>120 grit</b>	<b>26.00</b>
<b>220 grit</b>	<b>25.00</b>
<b>400 grit</b>	<b>25.00</b>
<b>600 grit</b>	<b>25.00</b>



<b>Bullet Burr Lg</b>	<b>1/4" Shaft</b>
<b>1.62" Diameter</b>	<b>4-1/2" OL</b>
<b>Part Number</b>	<b>BullB1.6</b>
<b>Max Speed:</b>	<b>5,000rpm</b>
<b>80 grit</b>	<b>\$72.00</b>
<b>120 grit</b>	<b>65.00</b>
<b>220 grit</b>	<b>65.00</b>
<b>400 grit</b>	<b>65.00</b>
<b>600 grit</b>	<b>65.00</b>



<b>Bullet Burr Md</b>	<b>1/4" Shaft</b>
<b>1.12" Diameter</b>	<b>3-1/4" OL</b>
<b>Part Number</b>	<b>BullB1.1</b>
<b>Max Speed:</b>	<b>5,000rpm</b>
<b>80 grit</b>	<b>\$44.00</b>
<b>120 grit</b>	<b>39.50</b>
<b>220 grit</b>	<b>39.50</b>
<b>400 grit</b>	<b>39.50</b>
<b>600 grit</b>	<b>39.50</b>

# Diamond Burrs

High quality nickel plated diamond burrs



Carver Burrs	1/4" Shaft
40/50 grit	
Part Number	CarverB
Max Speed:	15,000rpm
3/4" Diameter	\$8.50
1" Diameter	11.50
1-1/2" Diameter	16.00
2" Diameter	19.00
3" Diameter	29.00



Oval Burr Sm	1/8" Shaft
1/2" Diameter	1.75" OL
Part Number	OvalSBR
Max Speed:	9,000rpm
80 grit	\$12.90
120 grit	12.00
220 grit	12.00
400 grit	12.00
600 grit	12.00



Ball Burr	1/4" Shaft
1" Diameter	25mm Dia
Part Number	25BB
Max Speed:	18,000rpm
36 grit	\$25.00
80 grit	23.00
120 grit	23.00
220 grit	23.00
400 grit	23.00
600 grit	23.00



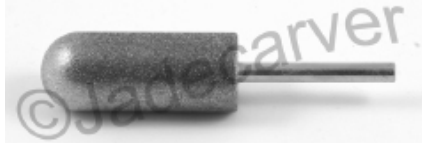
Oval Burr Lg	1/4" Shaft
3/4" Diameter	3.75" OL
Part Number	OvalLBR
Max Speed:	9,000rpm
80 grit	\$19.00
120 grit	18.00
220 grit	18.00
400 grit	18.00
600 grit	18.00



Ball Burr	1/4" Shaft
1-1/2"	38mm Dia
Part Number	38BB
Max Speed:	18,000rpm
36 grit	\$30.00
80 grit	28.00
120 grit	28.00
220 grit	28.00
400 grit	28.00
600 grit	28.00

# Diamond Burrs

High quality nickel plated diamond burrs



<b>R Drum Burr</b>	<b>1/4" Shaft</b>
<b>1" Diameter</b>	<b>OL = 4-1/2"</b>
<b>Part Number</b>	<b>DrumBR</b>
<b>Max Speed:</b>	<b>18,000rpm</b>
<b>36 grit</b>	<b>\$42.00</b>
<b>80 grit</b>	<b>38.00</b>
<b>120 grit</b>	<b>36.00</b>
<b>220 grit</b>	<b>35.00</b>
<b>400 grit</b>	<b>35.00</b>
<b>600 grit</b>	<b>35.00</b>



<b>Drum Burr</b>	<b>1/4" Shaft</b>
<b>1" Diameter</b>	<b>OL = 4-1/2"</b>
<b>Part Number</b>	<b>DrumB</b>
<b>Max Speed:</b>	<b>18,000rpm</b>
<b>36 grit</b>	<b>\$42.00</b>
<b>80 grit</b>	<b>38.00</b>
<b>120 grit</b>	<b>36.00</b>
<b>220 grit</b>	<b>35.00</b>
<b>400 grit</b>	<b>35.00</b>
<b>600 grit</b>	<b>35.00</b>



<b>Star Burr</b>	<b>1/4" Shaft</b>
<b>3/4" Diameter</b>	<b>20mm Dia</b>
<b>Part Number</b>	<b>StarB</b>
<b>Max Speed:</b>	<b>18,000rpm</b>
<b>80 grit</b>	<b>\$19.50</b>
<b>120 grit</b>	<b>19.50</b>
<b>220 grit</b>	<b>19.50</b>
<b>400 grit</b>	<b>19.50</b>



<b>Hourglass Burr</b>	<b>1/8" Shaft</b>
<b>12mm Dia</b>	<b>14mm Long</b>
<b>Part Number</b>	<b>12HGB</b>
<b>Max Speed:</b>	<b>18,000rpm</b>
<b>36 grit</b>	<b>\$18.00</b>
<b>80 grit</b>	<b>16.00</b>
<b>120 grit</b>	<b>16.00</b>
<b>220 grit</b>	<b>16.00</b>
<b>400 grit</b>	<b>16.00</b>
<b>600 grit</b>	<b>16.00</b>

# Sintered Diamond Burrs

High quality sintered diamond burrs



The above picture is just a sampling of the many different shapes of sintered burrs we stock.

Our experience with using Varankor sintered burrs is that they last more than 20 times longer than plated burrs when used on jade. Sintered burrs have diamond embedded in the heads all the way through to the shaft.

Professionals usually have a full set of sintered burrs of their favorite shapes in their tool kit. Hobbyists start out with a few sintered burrs of the shapes they use the most and gradually increase their collection over time.

Please visit our web site to view detailed pictures, descriptions, part numbers, speed ratings and pricing of the sintered burrs we stock:

**[www.jadecarver.com](http://www.jadecarver.com)**

--> Diamond Tools

----> Burrs

-----> Sintered Burrs

## Jadecarver.com Sintered Burrs

Color Code	Grit/Mesh
Purple	600-800
Black	325-400
Blue	200-270
Grey	120-140
Red	80-100

# Plated Diamond Drills and Saw Blades

High quality nickel plated diamond drills



Solid Drills	Package of 25
Part Number	25pcDrill
Max Speed:	18,000rpm
.75mm Dia	\$27.50
1.0mm Dia	27.50
1.25mm Dia	28.00
1.5mm Dia	28.50
2.0mm Dia	29.50
2.5mm Dia	30.50

Solid Drills	Package of 100
Part Number	100pcDrill
Max Speed:	18,000rpm
.75mm Dia	\$105.00
1.0mm Dia	105.00
1.25mm Dia	107.00
1.5mm Dia	109.00
2.0mm Dia	113.00
2.5mm Dia	117.00



Twist Diamond	Drill Set
1, 1.25, 1.5, 2.0	& 2.5mm
Part Number	5pcTwDrillSet
Max Speed:	2000rpm
5pc Set:	\$18.00



Saw Blade	1/8" Shaft
Plated	
Part Number	SawBlade
Max Speed:	900rpm
1" Diameter	\$5.00
2" Diameter	10.00



Core Drills	1/4" Shaft
Part Number	CD
Diameter is OD	
Max Speed:	1,000rpm
12mm, ~.47"	\$12.50
13mm, ~.51"	12.50
14mm, ~.55"	13.00
16mm, ~.63"	14.50
18mm, ~.7"	16.00
19mm, ~.75"	16.50
20mm, ~.78"	20.00
22mm, ~.86"	21.00
24mm, ~.94"	22.00
25mm, ~.98"	22.00
26mm, ~1.02"	23.00
28mm, ~1.1"	23.00
30mm, ~1.18"	24.00
32mm, ~1.26"	25.00
38mm, ~1.49"	28.00
50mm, ~1.96"	38.00



# Diamond Files and Rods

High quality nickel plated diamond files and rods



Straight File Set	
10pc Set	5.5" Long
Part Number	SFS10pc
80 grit	\$16.50
120 grit	15.50
220 grit	15.50
400 grit	15.50



Riffler File Set	
10pc Set	5.5" Long
Part Number	RFS10pc
36 grit	\$18.00
80 grit	16.50
120 grit	16.00
220 grit	16.00
400 grit	16.00



Rod Set	
1 mm, 2mm	3mm, 5mm
4pc Set	6" Long
Diamond Coated	2" End
Part Number	RS4pc
120 grit	\$12.50
220 grit	12.50
400 grit	12.50

# Diamond Flat Laps

High quality nickel plated 1mm thick solid steel diamond flat laps with a 1/2" hole

These laps do not flex like the thinner laps available elsewhere



8" Diamond Lap	~1mm Thick
1/2" Hole, Part #	Lap8
Must be used with backer plate	
Max Speed:	2,000rpm
36 grit	\$27.50
60 grit	28.50
80 grit	26.50
120 grit	26.00
180 grit	26.00
260 grit	26.00
360 grit	26.00
600 grit	26.00
1200 grit	26.00
3000 grit	26.00



6" Diamond Lap	~1mm Thick
1/2" Hole, Part #	Lap6
Must be used with backer plate	
Max Speed:	2,000rpm
36 grit	\$18.00
60 grit	16.50
80 grit	16.50
120 grit	16.00
180 grit	16.00
260 grit	16.00
360 grit	16.00
600 grit	16.00
1200 grit	16.00
3000 grit	16.00

# Diamond Paste

High quality diamond paste



Diamond Paste	5 grams
Part Number	DPaste5gr
11 Syringe Set	\$44.00
120 grit	4.50
220 grit	4.50
325 grit	4.50
600 grit	4.50
1200 grit	4.50
3000 grit	4.50
8000 grit	4.50
14000 grit	4.50
20000 grit	4.50
50000 grit	4.50
100000 grit	4.50

# Hard Felt Bobs



<b>Hard Felt Cyl</b>	<b>3.5" Diameter</b>
<b>Part Number</b>	<b>CylBob3.5</b>
<b>Max Speed:</b>	<b>1,000rpm</b>
	<b>\$29.00</b>



<b>Hard Felt Cyl</b>	<b>2" Diameter</b>
<b>Part Number</b>	<b>CylBob1.5</b>
<b>Max Speed:</b>	<b>1,000rpm</b>
	<b>\$15.50</b>



<b>Hard Felt Ball</b>	<b>1.5" Diameter</b>
<b>Part Number</b>	<b>BallBob1.5</b>
<b>Max Speed:</b>	<b>1,000rpm</b>
	<b>\$19.50</b>



<b>Felt Bob Set</b>	<b>3pc, Hard Felt</b>
<b>Part Number</b>	<b>VBobSet</b>
<b>Max Speed:</b>	<b>1,000rpm</b>
	<b>\$8.50</b>



<b>Felt Bob Set</b>	<b>5pc Hard Felt</b>
<b>Part Number</b>	<b>BobSet5pc</b>
<b>Max Speed:</b>	<b>1,000rpm</b>
	<b>\$11.00</b>



<b>Felt Bob Set</b>	<b>10pc Hard Felt</b>
<b>Part Number</b>	<b>BobSet10pc</b>
<b>Max Speed:</b>	<b>1,000rpm</b>
	<b>\$17.00</b>

## Diamond Pads & Diamond Cloth



<b>Diamond Pads</b>	<b>2" Diameter</b>
<b>With Hook and</b>	<b>Loop Backing</b>
<b>Part Number</b>	<b>FlatPad2</b>
<b>Max Speed:</b>	<b>3,700rpm</b>
<b>60 grit</b>	<b>\$19.50</b>
<b>80 grit</b>	<b>19.00</b>
<b>120 grit</b>	<b>18.50</b>
<b>220 grit</b>	<b>18.00</b>
<b>400 grit</b>	<b>18.00</b>
<b>600 grit</b>	<b>18.00</b>
<b>1200 grit</b>	<b>18.00</b>
<b>Set of 7</b>	<b>\$95.00</b>



<b>Diamond Cloth</b>	<b>11-1/2" x 4"</b>
<b>Part Number</b>	<b>DiaCloth</b>
<b>Durable Backing</b>	
<b>120 grit</b>	<b>\$135.00</b>
<b>220 grit</b>	<b>130.00</b>
<b>400 grit</b>	<b>125.00</b>
<b>600 grit</b>	<b>125.00</b>
<b>1200 grit</b>	<b>125.00</b>

# Silicon Carbide Blocks

High quality silicon carbide blocks

Soft binder blocks conform to the curve of the carving by using long strokes by hand.



Silicon Carbide	Blocks
Part Number	SCBlocksSmS
Soft Binder	6"x1/2"x1/4"
220 grit	\$7.50
400 grit	7.50
600 grit	7.50
1200 grit	7.50
Set of four grits:	\$27.00

Silicon Carbide	Blocks
Part Number	SCBlocksSmH
Hard Binder	6"x1/2"x1/4"
220 grit	\$7.50
400 grit	7.50
600 grit	7.50
1200 grit	7.50
Set of four grits:	\$27.00



Silicon Carbide	Blocks
Part Number	SCBlocksLgS
Soft Binder	6"x1"x1/2"
220 grit	\$10.50
400 grit	10.50
600 grit	10.50
1200 grit	10.50
Set of four grits:	\$38.00

Silicon Carbide	Blocks
Part Number	SCBlocksLgH
Hard Binder	6"x1"x1/2"
220 grit	\$10.50
400 grit	10.50
600 grit	10.50
1200 grit	10.50
Set of four grits:	\$38.00

## Application Tips For Silicon Carbide Blocks:

### Soft Binder Applications and Tips:

- Take out tool marks and scratches.
- Smooth curves in pendants and carvings.
- After several long strokes the silicon carbide block will conform to the curve of the stone.
- Use long strokes to maintain smooth curves.

### Hard Binder Applications and Tips:

- Use to define lines in pendants and carvings.
- Sharpen knives.

Use a trim saw to create custom shapes to get into tight areas.

Use a little water to maintain a slurry.



# NSK Micromotor

We are an authorized dealer for NSK



NSK MicroMotor Kit	Espt 500 Torque
List Price	\$1,929.00
Your Price	Call Us

For years we have sold the NSK Espt 500 Torque Set to professional jade carvers around the world. The Espt 500 precision hand piece can be balanced on one finger at 50,000 rpm. The motor is in the hand piece so there is no rotating shaft in the cable leading to the hand piece. Consequently there is very little vibration in the hand piece and the cable does not torque the wrist when using the hand piece. One can work for hours with this hand piece performing highly detailed work and not come away with a sore hand due to torque and vibration issues.

### Attachment

Ring Type

9090	EHR-500
------	---------

40,000 min<sup>-1</sup> Max. (s2)

90° Angle Torque Type

1551	ERA-270
------	---------

40,000 min<sup>-1</sup> Max. (s1) 20,000 min<sup>-1</sup> Max. (s2)

Lever Type

1515	EHL-401
------	---------

40,000 min<sup>-1</sup> Max. (s2)

LUSTER (Reciprocating motion)

1516	ELS-100
------	---------

30,000 min<sup>-1</sup> Max. (s1)

6 mm Torque Type

1552	EHG-400
------	---------

40,000 min<sup>-1</sup> Max. (s1) 30,000 min<sup>-1</sup> Max. (s2)

MINI-LUSTER (Reciprocating motion)

1554	EML-8
------	-------

30,000 min<sup>-1</sup> Max. (s2)

90° Angle Type

1525	EIC-300
------	---------

40,000 min<sup>-1</sup> Max. (s1) 20,000 min<sup>-1</sup> Max. (s2)

FINE BELT SANDER

1145	EBS-101
------	---------

40,000 min<sup>-1</sup> Max. (s1) 30,000 min<sup>-1</sup> Max. (s2)

45° Angle Type

1526	EKC-300
------	---------

40,000 min<sup>-1</sup> Max. (s1) 20,000 min<sup>-1</sup> Max. (s2)

### Speed Reducer

• 1/4 Speed Reducer

1553	ERG-01B
------	---------

40,000 min<sup>-1</sup> Max. (s1) 30,000 min<sup>-1</sup> Max. (s2)

May be connected between the motor and the spindle as the need of torque.

### Motor

• Compact Motor and Cord  
1,000~50,000 min<sup>-1</sup>

9088	ENK-500C
------	----------

• Torque Motor and Cord  
1,000~50,000 min<sup>-1</sup>

9089	ENK-500T
------	----------

### Control Unit

• Espt 500

9793 (120V)	NE96
9794 (230V)	

# Foredom Tools

Visit [www.foredom.net](http://www.foredom.net) to view all of Foredom's products

**We are a Master Distributor for Foredom.** If a Foredom product is not in stock we can have it drop-shipped directly to you from Foredom. Call or email us for items not listed below.



<b>Jeweler's Kit</b>	
<b>Part Number</b>	<b>K.2230</b>
<b>List Price</b>	<b>\$406.01</b>
<b>Your Price</b>	<b>\$324.00</b>



<b>Carving Kit</b>	
<b>Part Number</b>	<b>KTX.300</b>
<b>List Price</b>	<b>\$499.70</b>
<b>Your Price</b>	<b>\$399.00</b>



<b>Drill Press</b>	
<b>Part Number</b>	<b>P-DP30</b>
<b>List Price</b>	<b>\$203.01</b>
<b>Your Price</b>	<b>\$162.00</b>



<b>Angle Grinder</b>	<b>With H.30 Handpiece</b>
<b>Part Number</b>	<b>AK69130</b>
<b>List Price</b>	<b>\$182.00</b>
<b>Your Price</b>	<b>\$145.00</b>



<b>Grinder Head</b>	<b>w/o Handpiece</b>
<b>Part Number</b>	<b>AK69110</b>
<b>List Price</b>	<b>\$144.14</b>
<b>Your Price</b>	<b>\$115.00</b>



<b>Filter Hood</b>	
<b>Part Number</b>	<b>MAFH25</b>
<b>List Price</b>	<b>\$359.16</b>
<b>Your Price</b>	<b>\$287.00</b>

# Grinding, Polishing and Safety Tips

## Stone Grinding Tips:

- Remove material with coarse grits and then use successive finer grits to prepare for the polishing stages.  
For example use 80 or 120 grit to remove excess material. Note that 600 grit tools are designed to remove 400 grit scratches, 400 grit tools are designed to remove 220 grit scratches, 220 grit tools are designed to remove 120 grit scratches. Skipping a grit will cause the finer grit tools to wear out prematurely. Trying to remove material with a 400 or 600 grit plated burr will result in wearing out the tool in minutes. However one can remove material with 220, 400 and 600 grit sintered burrs
- Note that 80 and 120 grit tools may not appropriate for fragile or brittle stones like opals, crystals and glass.
- After finishing with 600 grit diamond tools some stones can be polished in one step with tin oxide, chrome oxide, Linde A or other polishing compounds.

## Hard stone professional polishing tip for curved stone work (pendants, carvings, etc):

- After finishing with 600 grit diamond burrs, wash the work and hands with soap and water.
- Use 600 grit silicon carbide blocks with water (just enough to work with a slurry) to hand work all of the tool marks out and to smooth curves on the stone.
- Repeat this step with 1200 grit silicon carbide blocks.
- Continue with 1200 grit diamond paste on hard felt bobs.
- Continue with 3000 grit diamond paste and repeat with finer grits to get the polish desired.
- Some stones do not polish better than 3000 grit, others will take high polishes up to 100,000 grit.

## Micromotor Safety Tips:

The NSK Micromotor has such a torque capability that can bend burrs in half. This could cause serious injury and also cause damage to the handpiece. Some things that can cause this to happen are:

- The micromotor is started at high speeds (start the micromotor at lowest speed setting).
- The burr is too long or is not seated all the way into the collet.
- The micromotor is being used with a burr beyond the burr speed rating.
- The burr head has too much mass for the speed being used.

## General Safety Tips:

- Wear eye, face and body protection when using any power tool to prevent serious injuries.
- Use a respirator or dust collection system to prevent inhaling dust, abrasives, grinding or polishing compounds or other debris into your sinuses and lungs.
- Use ear protection when operating motorized devices.
- Stay within manufacturers speed ratings.
- When using high speed devices such as micromotors, turn the device on at a low speed and then adjust to the desired operating speed. Failure to do so may result in damage to the equipment and or personal injury.

## Copyright Information:

All rights are reserved. This entire catalog is copyrighted including all pictures and text. This catalog may be copied in its entirety only, and used in its entirety only, for the purpose of purchasing products from us. Any other use is prohibited unless permission has been granted in writing from David R. Clayton.