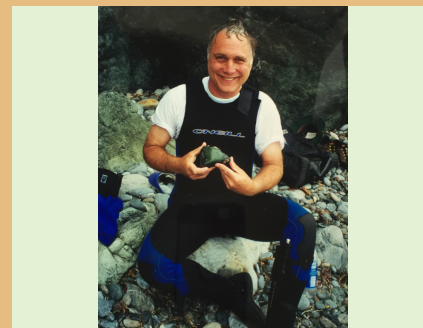
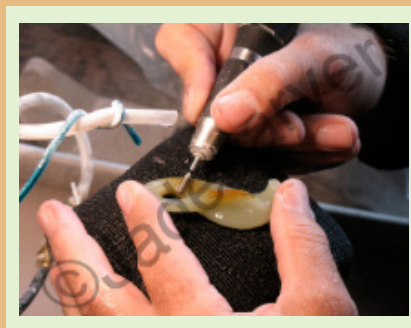


Jadecarver.com

2022 Diamond Tools Catalog



Diamond Tools
Diamond Paste
Micromotors

**Tools for Stone, Glass, Jewelry &
Industrial Applications**

Welcome to the Jadecarver.com Tools Catalog

Our Products:

We are jade carvers and use the products we sell. We custom design many of our products that are manufactured by factories in the US, Canada, Europe and China. These factories make many of the tools to our specifications and tolerances from our CAD drawings, which is why many of our tools are unique and durable. Contact us for information regarding quantity custom tool designs.

We reserve the right to vary the specifications and dimensions of our products without notice.

Ordering, Shipping and Payment Information:

Note that the prices and specifications in this catalog are subject to change without notice.

USA Customers can order directly from our web site or call us. Payment by Credit Card or PayPal.

International customers call us or send an email detailing the products wanted. We will then provide shipping options and pricing. Payment by PayPal or wire transfer.

Returns:

Most items may be returned within 7 days of your receiving the product as long as the item has not been installed or used and is returned in its new original packaging. Items that are not returnable are: special orders, motorized devices, diamond cloth, diamond paste and diamond powder (we cannot take a chance that they have been contaminated).

Your satisfaction is important to us. Should you encounter a problem with any of our products please contact us.

Caution: Safety Issues:

Always wear eye, body and face protection when using power tools to prevent serious injury.

Use a respirator and dust collection system to prevent inhaling dust, abrasives, grinding and polishing compounds or other debris into your sinuses and lungs.

Use ear protection when operating motorized devices.

Operate within speed ratings for rotary tools. Failure to do so may result in damage to the equipment and/or serious personal injury.

When using high speed devices **such as micromotors**, turn the device on at a low speed and then adjust to the desired operating speed. Do not exceed the maximum speed ratings for each product in this catalog. Failure to do so may result in damage to the equipment and/or serious personal injury.

Shows:

See us in person at shows. Refer to our web site for show dates listed on the **Events** link.

Visit us in Room 122 at the **Pueblo Gem Show in January 27 through February 28, 2022** at:

The Ramada by Wyndham (formally known as the River Park Inn)
777 W Cushing St, Tucson, Arizona

Contact Information:

Gems & Jade

Concord, California, USA

Telephone: (925) 689-8840

International: 001-925-689-8840

Email: jadecarver@jadecarver.com

Web: www.jadecarver.com

Thank you for using our products,

David R. Clayton

Owner and Jadecarver



Diamond Tool Product Index

Welcome	Page 2
Index.....	Page 3
Flat Grinding Wheels.....	Page 4
V Grinding Wheels.....	Page 5
Convex Grinding Wheels	Page 6
Concave Grinding Wheels	Page 7
Bushings for Grinding Wheels	Page 7
Burr Sets.....	Pages 8 & 9
Burrs	Pages 10, 11, 12 & 13
Burrs, Sintered	Page 13
Drills	Page 14
Drills, Sintered	Page 15
Saw Blades.....	Page 16
File and Rod Sets.....	Page 17
Flat Laps.....	Page 18
Diamond Powder.....	Page 19
Diamond Paste.....	Page 19
Felt Bobs	Page 20
2" Diamond Pads	Page 21
Diamond Cloth.....	Page 21
Expandable Drums.....	Page 22
Silicon Carbide Belts	Page 22
Silicon Carbide Blocks.....	Page 23
NSK Micromotor	Page 24
Foredom Flex Shaft Motors and Accessories	Page 25
Grinding, Polishing and Safety Tips.....	Page 26

Flat Diamond Grinding Wheels

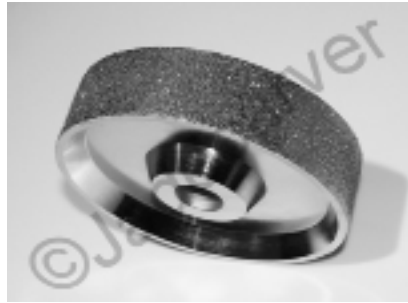
High quality nickel plated diamond grinding wheels

These wheels have a 1 inch hole. Bushings are available to adapt the wheels to 1/2", 5/8" and 3/4" arbors.

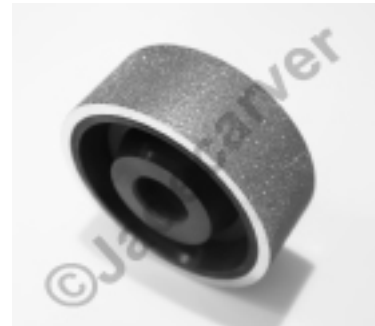
Please specify when you order if you need bushings (see page 7).



8"x1-1/2"	Composite, Flat
Part Number	8x1.5CFlat
Max Speed:	2,400rpm
60 grit	\$135.00
80 grit	135.00
120 grit	130.00
220 grit	115.00
400 grit	115.00
600 grit	115.00



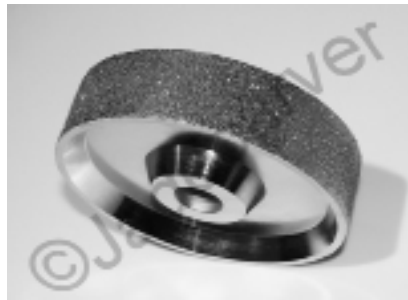
8"x1-1/2"	Steel Core, Flat
Part Number	8x1.5SFlat
Max Speed:	2,400rpm
36 grit	\$199.50
80 grit	169.50



4"x1-1/2"	Composite, Flat
Part Number	4x1.5CFlat
Max Speed:	2,400rpm
60 grit	\$91.50
80 grit	89.50
120 grit	79.50
220 grit	72.50
400 grit	72.50
600 grit	72.50



6"x1"	Steel Core, Flat
Part Number	6x1SFlat
Max Speed:	2,400rpm
36 grit	\$123.50
60 grit	118.50
80 grit	102.50
120 grit	88.50
220 grit	78.50
400 grit	78.50
600 grit	78.50



6"x1-1/2"	Steel Core, Flat
Part Number	6x1.5SFlat
Max Speed:	2,400rpm
36 grit	\$146.50
60 grit	141.50
80 grit	139.50
120 grit	129.50
220 grit	109.50
400 grit	109.50
600 grit	109.50



6"x2-1/2"	Steel Core, Flat
Part Number	6x2.5SFlat
Max Speed:	2,400rpm
36 grit	\$210.50
80 grit	199.50
120 grit	184.50
220 grit	169.50

V Diamond Grinding Wheels

High quality nickel plated diamond grinding wheels

These wheels have a 1 inch hole. Bushings are available to adapt the wheels to 1/2", 5/8" and 3/4" arbors.

Please specify when you order if you need bushings (see page 7).



6"x1", Steel	60 Degree V
Part Number	6x1SV
Max Speed:	2,400rpm
50 grit	\$93.50
80 grit	85.50
120 grit	79.50
220 grit	73.50
400 grit	73.50
600 grit	73.50



4"x1/2", Steel	30 Degree V
Part Number	4x.5SV
Max Speed:	2,400rpm
80 grit	\$51.50
120 grit	46.50
220 grit	41.50
400 grit	41.50
600 grit	41.50

Convex Diamond Grinding Wheels

High quality nickel plated diamond grinding wheels

These wheels have a 1 inch hole. Bushings are available to adapt the wheels to 1/2", 5/8" and 3/4" arbors. Please specify when you order if you need bushings (see page 7).



6"x1-1/2"	Convex
Part Number	6x1.5SVex
Max Speed:	2,400rpm
50 grit	\$141.50
80 grit	139.50
120 grit	129.50
220 grit	109.50
400 grit	109.50
600 grit	109.50



6"x1/4"	Convex
Part Number	6x.25SVex
Max Speed:	2,400rpm
50 grit	\$58.50
80 grit	53.50
120 grit	49.50
220 grit	47.50
400 grit	47.50
600 grit	47.50



6"x1"	Convex
Part Number	6x1SVex
Max Speed:	2,400rpm
50 grit	\$118.50
80 grit	102.50
120 grit	88.50
220 grit	78.50
400 grit	78.50
600 grit	78.50



4"x1-1/2"	Convex
Part Number	4x.5SVex
Max Speed:	2,400rpm
80 grit	\$47.50
120 grit	43.50
220 grit	41.50
400 grit	41.50
600 grit	41.50



6"x1/2"	Convex
Part Number	6x.5SVex
Max Speed:	2,400rpm
50 grit	\$74.50
80 grit	69.50
120 grit	66.50
220 grit	64.50
400 grit	64.50
600 grit	64.50



4"x1/4"	Convex
Part Number	4x.25SVex
Max Speed:	2,400rpm
80 grit	\$44.50
120 grit	39.50
220 grit	37.50
400 grit	37.50
600 grit	37.50

Concave Diamond Grinding Wheels

High quality nickel plated diamond grinding wheels

These wheels have a 1 inch hole. Bushings are available to adapt the wheels to 1/2", 5/8" and 3/4" arbors. Please specify when you order if you need bushings (see below).



6"x1-1/2"	Concave
Part Number	6x1.5SCave
Max Speed:	2,400rpm
80 grit	\$139.50
120 grit	129.50
220 grit	109.50
400 grit	109.50
600 grit	109.50



6"x1"	Concave
Part Number	6x1SCave
Max Speed:	2,400rpm
80 grit	\$102.50
120 grit	88.50
220 grit	78.50
400 grit	78.50
600 grit	78.50



4"x1/2"	Concave
Part Number	4x.5SCave
Max Speed:	2,400rpm
80 grit	\$47.50
120 grit	43.50
220 grit	41.50
400 grit	41.50
600 grit	41.50



Bushings	
Part Number	Bushing
1/2 inch wide *	\$2.50
3/4 inch wide **	2.50
1 inch wide	2.50

The outside diameter of the bushings are 1 inch and fit all of our wheels. All bushings telescope to fit 1/2", 5/8" or 3/4" arbors.

*For 1/4" wide wheels use a 1/2" bushing and grind it down to 1/4".

**Use 2 of the 3/4 inch bushings for diamond wheels that are 1-1/2" wide.

Diamond Burr Sets

High quality nickel plated diamond burrs



50pc Set, Lg	1/8" Shaft
Part Number	BS50pcL
Max Speed:	35,000rpm
120 grit	\$29.90



50pc Set, Sm	1/8" Shaft
Part Number	BS50pcS
Max Speed:	40,000rpm
36 grit	\$24.00
80 grit	20.50
120 grit	19.50
220 grit	19.50
400 grit	19.50
600 grit	19.50



30pc Set	1/8" Shaft
Part Number	BS30pc
Max Speed:	40,000rpm
36 grit	\$14.00
80 grit	13.00
120 grit	12.00
220 grit	12.00
400 grit	12.00
600 grit	12.00



Ball Burr Set	1/8" Shaft
2mm - 15mm	14pc Set
Part Number	BBS14pc
Max Speed:	40,000rpm
36 grit	\$32.50
80 grit	29.50
120 grit	28.50
220 grit	28.50
400 grit	28.50
600 grit	28.50



20pc Large Set	1/4" Shaft
Part Number	LBS20pc
Max Speed:	5,000rpm
36 grit	\$32.50
80 grit	30.50
120 grit	29.50
220 grit	29.50
400 grit	29.50
600 grit	29.50

Diamond Burr Sets

High quality nickel plated diamond burrs



V Burr Set	1/8" Shaft
19mm OD	3pc Set
Part Number	VBS3pc
Max Speed:	16,000rpm
80 grit	\$21.00
120 grit	21.00
220 grit	21.00
400 grit	21.00



Radius Burr Set	1/8" Shaft
To Radius Holes	4pc Set
Part Number	RadiusBS
Max Speed:	18,000rpm
80 grit	\$28.00
120 grit	28.00
220 grit	28.00
400 grit	28.00



Cup Set, Small	1/8" Shaft
2-10mm, OD	9pc Set
Part Number	CupBSS9pc
Max Speed:	18,000rpm
120 grit	\$23.90
220 grit	23.90
400 grit	23.90



V Burr Set	3/32" Shaft
4, 6, 8, 10mm OD	8pc Set
Part Number	VBS8pc
Max Speed:	18,000rpm
220 grit	\$29.00
400 grit	29.00

Diamond Burrs

High quality nickel plated diamond burrs



Tire Burr	1/4" Shaft
1.5" D x 1/2" W	38mm x 13mm
Part Number	TB38X13
Max Speed:	18,000rpm
36 grit	\$33.00
80 grit	30.00
120 grit	29.00
220 grit	28.00
400 grit	28.00
600 grit	28.00



Tire Burr	1/4" Shaft
1.5" D x 1/4" W	38mm x 6mm
Part Number	TB38X6
Max Speed:	18,000rpm
36 grit	\$29.00
80 grit	27.00
120 grit	26.00
220 grit	25.00
400 grit	25.00
600 grit	25.00



Tire Burr	1/8" Shaft
1" Diameter	25mm Dia
Part Number	TB25
Max Speed:	18,000rpm
36 grit	\$18.00
80 grit	16.00
120 grit	16.00
220 grit	16.00
400 grit	16.00
600 grit	16.00



Bullet Burr Lg	1/4" Shaft
1.62" Diameter	4-1/2" OL
Part Number	BullB1.6
Max Speed:	5,000rpm
80 grit	72.00
120 grit	65.00
220 grit	65.00
400 grit	65.00
600 grit	65.00



Bullet Burr Md	1/4" Shaft
1.12" Diameter	3-1/4" OL
Part Number	BullB1.1
Max Speed:	5,000rpm
80 grit	44.00
120 grit	39.50
220 grit	39.50
400 grit	39.50
600 grit	39.50

Diamond Burrs

High quality nickel plated diamond burrs



Carver Burrs	1/4" Shaft
40/50 grit	
Part Number	CarverB
Max Speed:	15,000rpm
3/4" Diameter	\$8.50
1" Diameter	11.50
1-1/2" Diameter	16.00
2" Diameter	19.00
3" Diameter	29.00



Cone Burr	1/4" Shaft
~3/4" Diameter	19mm Dia
Part Number	ConeB19
Max Speed:	18,000rpm
36 grit	\$20.00
80 grit	18.00
120 grit	18.00
220 grit	18.00
400 grit	18.00
600 grit	18.00



Ball Burr	1/4" Shaft
1" Diameter	25mm Dia
Part Number	25BB
Max Speed:	18,000rpm
36 grit	\$25.00
80 grit	23.00
120 grit	23.00
220 grit	23.00
400 grit	23.00
600 grit	23.00



Oval Burr Lg	1/4" Shaft
3/4" Diameter	3.75" OL
Part Number	OvalLBR
Max Speed:	9,000rpm
80 grit	19.00
120 grit	18.00
220 grit	18.00
400 grit	18.00
600 grit	18.00



Ball Burr	1/4" Shaft
1-1/2"	38mm Dia
Part Number	38BB
Max Speed:	18,000rpm
36 grit	\$30.00
80 grit	28.00
120 grit	28.00
220 grit	28.00
400 grit	28.00
600 grit	28.00



Oval Burr Sm	1/8" Shaft
1/2" Diameter	1.75" OL
Part Number	OvalSBR
Max Speed:	9,000rpm
80 grit	12.90
120 grit	12.00
220 grit	12.00
400 grit	12.00
600 grit	12.00

Diamond Burrs

High quality nickel plated diamond burrs



R Drum Burr	1/4" Shaft
1" Diameter	OL = 4-1/2"
Part Number	DrumBR
Max Speed:	18,000rpm
36 grit	\$42.00
80 grit	38.00
120 grit	36.00
220 grit	35.00
400 grit	35.00
600 grit	35.00



Drum Burr	1/4" Shaft
1" Diameter	OL = 4-1/2"
Part Number	DrumB
Max Speed:	18,000rpm
36 grit	\$42.00
80 grit	38.00
120 grit	36.00
220 grit	35.00
400 grit	35.00
600 grit	35.00



Star Burr	1/4" Shaft
3/4" Diameter	20mm Dia
Part Number	StarB
Max Speed:	18,000rpm
80 grit	\$19.50
120 grit	19.50
220 grit	19.50
400 grit	19.50



Hourglass Burr	1/8" Shaft
12mm Dia	14mm Long
Part Number	12HGB
Max Speed:	18,000rpm
36 grit	\$18.00
80 grit	16.00
120 grit	16.00
220 grit	16.00
400 grit	16.00
600 grit	16.00

Sintered Diamond Burrs

High quality sintered diamond burrs



Our experience with using Varankor sintered burrs is that they last more than 20 times longer than plated burrs when used on jade. Sintered burrs have diamond embedded in the heads all the way through to the shaft.

Professionals usually have a full set of sintered burrs of their favorite shapes in their tool kit. Hobbyists start out with a few sintered burrs of the shapes they use the most and gradually increase their collection over time.

Please visit our web site to view detailed pictures, descriptions, part numbers, speed ratings and pricing of the sintered burrs we stock:

www.jadecarver.com

--> Diamond Tools
 ----> Burrs
 -----> Sintered Burrs

Thank you,

~David Clayton

Part Number	Size	Speed Rating
10	1/8"	10,000 RPM
11	1/8"	10,000 RPM
12	1/8"	10,000 RPM
13	1/8"	10,000 RPM
14	1/8"	10,000 RPM
15	1/8"	10,000 RPM
16	1/8"	10,000 RPM
17	1/8"	10,000 RPM
18	1/8"	10,000 RPM
19	1/8"	10,000 RPM
20	1/8"	10,000 RPM

Dist. by: **Castro & Lusk**
 1501 E. 1st St. Suite 100
 Chico, CA 95926
 (530) 893-1000
www.jadecarver.com



Castro
 Always use operating speeds:
 1/8" Dia to 10,000 RPM; 3/16" Dia to 8,000 RPM;
 1/4" Dia to 6,000 RPM; 3/8" Dia to 4,000 RPM;
 1/2" Dia to 3,000 RPM

Varencor®		Solid Sintered Diamond Bur Collection		www.jadecarver.com (925) 689-8840		Varencor®		
10	1/8"	10,000 RPM	10	1/8"	10,000 RPM	10	1/8"	10,000 RPM
11	1/8"	10,000 RPM	11	1/8"	10,000 RPM	11	1/8"	10,000 RPM
12	1/8"	10,000 RPM	12	1/8"	10,000 RPM	12	1/8"	10,000 RPM
13	1/8"	10,000 RPM	13	1/8"	10,000 RPM	13	1/8"	10,000 RPM
14	1/8"	10,000 RPM	14	1/8"	10,000 RPM	14	1/8"	10,000 RPM
15	1/8"	10,000 RPM	15	1/8"	10,000 RPM	15	1/8"	10,000 RPM
16	1/8"	10,000 RPM	16	1/8"	10,000 RPM	16	1/8"	10,000 RPM
17	1/8"	10,000 RPM	17	1/8"	10,000 RPM	17	1/8"	10,000 RPM
18	1/8"	10,000 RPM	18	1/8"	10,000 RPM	18	1/8"	10,000 RPM
19	1/8"	10,000 RPM	19	1/8"	10,000 RPM	19	1/8"	10,000 RPM
20	1/8"	10,000 RPM	20	1/8"	10,000 RPM	20	1/8"	10,000 RPM
21	1/8"	10,000 RPM	21	1/8"	10,000 RPM	21	1/8"	10,000 RPM
22	1/8"	10,000 RPM	22	1/8"	10,000 RPM	22	1/8"	10,000 RPM
23	1/8"	10,000 RPM	23	1/8"	10,000 RPM	23	1/8"	10,000 RPM
24	1/8"	10,000 RPM	24	1/8"	10,000 RPM	24	1/8"	10,000 RPM
25	1/8"	10,000 RPM	25	1/8"	10,000 RPM	25	1/8"	10,000 RPM
26	1/8"	10,000 RPM	26	1/8"	10,000 RPM	26	1/8"	10,000 RPM
27	1/8"	10,000 RPM	27	1/8"	10,000 RPM	27	1/8"	10,000 RPM
28	1/8"	10,000 RPM	28	1/8"	10,000 RPM	28	1/8"	10,000 RPM
29	1/8"	10,000 RPM	29	1/8"	10,000 RPM	29	1/8"	10,000 RPM
30	1/8"	10,000 RPM	30	1/8"	10,000 RPM	30	1/8"	10,000 RPM
31	1/8"	10,000 RPM	31	1/8"	10,000 RPM	31	1/8"	10,000 RPM
32	1/8"	10,000 RPM	32	1/8"	10,000 RPM	32	1/8"	10,000 RPM
33	1/8"	10,000 RPM	33	1/8"	10,000 RPM	33	1/8"	10,000 RPM
34	1/8"	10,000 RPM	34	1/8"	10,000 RPM	34	1/8"	10,000 RPM
35	1/8"	10,000 RPM	35	1/8"	10,000 RPM	35	1/8"	10,000 RPM
36	1/8"	10,000 RPM	36	1/8"	10,000 RPM	36	1/8"	10,000 RPM
37	1/8"	10,000 RPM	37	1/8"	10,000 RPM	37	1/8"	10,000 RPM
38	1/8"	10,000 RPM	38	1/8"	10,000 RPM	38	1/8"	10,000 RPM
39	1/8"	10,000 RPM	39	1/8"	10,000 RPM	39	1/8"	10,000 RPM
40	1/8"	10,000 RPM	40	1/8"	10,000 RPM	40	1/8"	10,000 RPM
41	1/8"	10,000 RPM	41	1/8"	10,000 RPM	41	1/8"	10,000 RPM
42	1/8"	10,000 RPM	42	1/8"	10,000 RPM	42	1/8"	10,000 RPM
43	1/8"	10,000 RPM	43	1/8"	10,000 RPM	43	1/8"	10,000 RPM
44	1/8"	10,000 RPM	44	1/8"	10,000 RPM	44	1/8"	10,000 RPM
45	1/8"	10,000 RPM	45	1/8"	10,000 RPM	45	1/8"	10,000 RPM
46	1/8"	10,000 RPM	46	1/8"	10,000 RPM	46	1/8"	10,000 RPM
47	1/8"	10,000 RPM	47	1/8"	10,000 RPM	47	1/8"	10,000 RPM
48	1/8"	10,000 RPM	48	1/8"	10,000 RPM	48	1/8"	10,000 RPM
49	1/8"	10,000 RPM	49	1/8"	10,000 RPM	49	1/8"	10,000 RPM
50	1/8"	10,000 RPM	50	1/8"	10,000 RPM	50	1/8"	10,000 RPM
51	1/8"	10,000 RPM	51	1/8"	10,000 RPM	51	1/8"	10,000 RPM
52	1/8"	10,000 RPM	52	1/8"	10,000 RPM	52	1/8"	10,000 RPM
53	1/8"	10,000 RPM	53	1/8"	10,000 RPM	53	1/8"	10,000 RPM
54	1/8"	10,000 RPM	54	1/8"	10,000 RPM	54	1/8"	10,000 RPM
55	1/8"	10,000 RPM	55	1/8"	10,000 RPM	55	1/8"	10,000 RPM
56	1/8"	10,000 RPM	56	1/8"	10,000 RPM	56	1/8"	10,000 RPM
57	1/8"	10,000 RPM	57	1/8"	10,000 RPM	57	1/8"	10,000 RPM
58	1/8"	10,000 RPM	58	1/8"	10,000 RPM	58	1/8"	10,000 RPM
59	1/8"	10,000 RPM	59	1/8"	10,000 RPM	59	1/8"	10,000 RPM
60	1/8"	10,000 RPM	60	1/8"	10,000 RPM	60	1/8"	10,000 RPM
61	1/8"	10,000 RPM	61	1/8"	10,000 RPM	61	1/8"	10,000 RPM
62	1/8"	10,000 RPM	62	1/8"	10,000 RPM	62	1/8"	10,000 RPM
63	1/8"	10,000 RPM	63	1/8"	10,000 RPM	63	1/8"	10,000 RPM
64	1/8"	10,000 RPM	64	1/8"	10,000 RPM	64	1/8"	10,000 RPM
65	1/8"	10,000 RPM	65	1/8"	10,000 RPM	65	1/8"	10,000 RPM
66	1/8"	10,000 RPM	66	1/8"	10,000 RPM	66	1/8"	10,000 RPM
67	1/8"	10,000 RPM	67	1/8"	10,000 RPM	67	1/8"	10,000 RPM
68	1/8"	10,000 RPM	68	1/8"	10,000 RPM	68	1/8"	10,000 RPM
69	1/8"	10,000 RPM	69	1/8"	10,000 RPM	69	1/8"	10,000 RPM
70	1/8"	10,000 RPM	70	1/8"	10,000 RPM	70	1/8"	10,000 RPM
71	1/8"	10,000 RPM	71	1/8"	10,000 RPM	71	1/8"	10,000 RPM
72	1/8"	10,000 RPM	72	1/8"	10,000 RPM	72	1/8"	10,000 RPM
73	1/8"	10,000 RPM	73	1/8"	10,000 RPM	73	1/8"	10,000 RPM
74	1/8"	10,000 RPM	74	1/8"	10,000 RPM	74	1/8"	10,000 RPM
75	1/8"	10,000 RPM	75	1/8"	10,000 RPM	75	1/8"	10,000 RPM
76	1/8"	10,000 RPM	76	1/8"	10,000 RPM	76	1/8"	10,000 RPM
77	1/8"	10,000 RPM	77	1/8"	10,000 RPM	77	1/8"	10,000 RPM
78	1/8"	10,000 RPM	78	1/8"	10,000 RPM	78	1/8"	10,000 RPM
79	1/8"	10,000 RPM	79	1/8"	10,000 RPM	79	1/8"	10,000 RPM
80	1/8"	10,000 RPM	80	1/8"	10,000 RPM	80	1/8"	10,000 RPM
81	1/8"	10,000 RPM	81	1/8"	10,000 RPM	81	1/8"	10,000 RPM
82	1/8"	10,000 RPM	82	1/8"	10,000 RPM	82	1/8"	10,000 RPM
83	1/8"	10,000 RPM	83	1/8"	10,000 RPM	83	1/8"	10,000 RPM
84	1/8"	10,000 RPM	84	1/8"	10,000 RPM	84	1/8"	10,000 RPM
85	1/8"	10,000 RPM	85	1/8"	10,000 RPM	85	1/8"	10,000 RPM
86	1/8"	10,000 RPM	86	1/8"	10,000 RPM	86	1/8"	10,000 RPM
87	1/8"	10,000 RPM	87	1/8"	10,000 RPM	87	1/8"	10,000 RPM
88	1/8"	10,000 RPM	88	1/8"	10,000 RPM	88	1/8"	10,000 RPM
89	1/8"	10,000 RPM	89	1/8"	10,000 RPM	89	1/8"	10,000 RPM
90	1/8"	10,000 RPM	90	1/8"	10,000 RPM	90	1/8"	10,000 RPM
91	1/8"	10,000 RPM	91	1/8"	10,000 RPM	91	1/8"	10,000 RPM
92	1/8"	10,000 RPM	92	1/8"	10,000 RPM	92	1/8"	10,000 RPM
93	1/8"	10,000 RPM	93	1/8"	10,000 RPM	93	1/8"	10,000 RPM
94	1/8"	10,000 RPM	94	1/8"	10,000 RPM	94	1/8"	10,000 RPM
95	1/8"	10,000 RPM	95	1/8"	10,000 RPM	95	1/8"	10,000 RPM
96	1/8"	10,000 RPM	96	1/8"	10,000 RPM	96	1/8"	10,000 RPM
97	1/8"	10,000 RPM	97	1/8"	10,000 RPM	97	1/8"	10,000 RPM
98	1/8"	10,000 RPM	98	1/8"	10,000 RPM	98	1/8"	10,000 RPM
99	1/8"	10,000 RPM	99	1/8"	10,000 RPM	99	1/8"	10,000 RPM
100	1/8"	10,000 RPM	100	1/8"	10,000 RPM	100	1/8"	10,000 RPM

Plated Diamond Drills

High quality nickel plated diamond drills



Solid Drills	Package of 25
Part Number	25pcDrill
Max Speed:	18,000rpm
.75mm Dia	\$27.50
1.0mm Dia	27.50
1.25mm Dia	28.00
1.5mm Dia	28.50
2.0mm Dia	29.50
2.5mm Dia	30.50

Solid Drills	Package of 100
Part Number	100pcDrill
Max Speed:	18,000rpm
.75mm Dia	\$105.00
1.0mm Dia	105.00
1.25mm Dia	107.00
1.5mm Dia	109.00
2.0mm Dia	113.00
2.5mm Dia	117.00



Twist Diamond	Drill Set
1, 1.25, 1.5, 2.0	& 2.5mm
Part Number	5pcTwDrillSet
Max Speed:	2000rpm
5pc Set:	\$15.00



Core Drills	Straight Shaft
Part Number	CD
Max Speed:	2,000rpm
2.5mm	\$2.25
3mm	2.75
4mm	3.50
6mm, ~1/4"	5.50
8mm	7.50
10mm	9.50



Core Drills	1/4" Shaft
Part Number	CD
Diameter is OD	
Max Speed:	1,000rpm
12mm, ~.47"	\$12.50
13mm, ~.51"	\$12.50
14mm, ~.55"	\$13.00
16mm, ~.63"	\$14.50
18mm, ~.7"	\$16.00
19mm, ~.75"	\$16.50
20mm, ~.78"	\$20.00
22mm, ~.86"	\$21.00
24mm, ~.94"	\$22.00
25mm, ~.98"	\$22.00
26mm, ~1.02"	\$23.00
28mm, ~1.1"	\$23.00
30mm, ~1.18"	\$24.00
32mm, ~1.26"	\$25.00
38mm, ~1.49"	\$28.00
50mm, ~1.96"	\$38.00

Sintered Diamond Drills

High quality sintered diamond core drills have diamond imbedded throughout the bronze, resulting in drills that last more than 4 times longer than plated drills.



Core Drills	1/8" Shaft
Part Number	SCD6mm
Max Speed:	2,000rpm
6mm, ~1/4"	\$9.50



Core Drills	1/4" Shaft
Part Number	SCD
Max Speed:	1,800rpm
13mm, ~1/2"	\$17.50
Max Speed:	1,500rpm
19mm, ~3/4"	25.00
Max Speed:	1,100rpm
25mm, ~1"	36.00
Max Speed:	1,000rpm
38mm, ~1-1/2"	50.00
Max Speed:	1,000rpm
51mm, ~2"	68.00



Core Drill, Long	1/2" Shaft
Overall Length:	180mm
Part Number	LSCD
Max Speed:	1,800rpm
13mm, ~1/2"	\$28.00
Max Speed:	1,600rpm
16mm, ~5/8"	31.00
Max Speed:	1,500rpm
19mm, ~3/4"	34.00
Max Speed:	1,100rpm
25mm, ~1"	45.00
Max Speed:	1,000rpm
38mm, ~1-1/2"	65.00
Max Speed:	1,000rpm
51mm, ~2"	88.00
Max Speed:	950rpm
63mm, ~2-1/2"	94.00
Max Speed:	900rpm
76mm, ~3"	124.00
Max Speed:	850rpm
89mm, ~3-1/2"	137.00
Max Speed:	800rpm
101mm, ~4"	149.00

Saw Blades

Nickel plated diamond saw blades



Saw Blade	1/8" Shaft
Plated	
Part Number	SawBlade
Max Speed:	900rpm
1" Diameter	\$5.00
2" Diameter	10.00

Diamond Files and Rods

High quality nickel plated diamond files and rods



Straight File Set	
10pc Set	5.5" Long
Part Number	SFS10pc
80 grit	\$15.50
120 grit	14.50
220 grit	14.50
400 grit	14.50



Riffler File Set	
10pc Set	5.5" Long
Part Number	RFS10pc
36 grit	\$17.00
80 grit	15.50
120 grit	15.00
220 grit	15.00
400 grit	15.00



Rod Set	
1 mm, 2mm	3mm, 5mm
4pc Set	6" Long
Diamond Coated	2" End
Part Number	RS4pc
120 grit	\$12.50
220 grit	12.50
400 grit	12.50

Diamond Flat Laps

High quality nickel plated 1mm thick solid steel diamond flat laps with a 1/2" hole



8" Diamond Lap	~1mm Thick
1/2" Hole, Part #	Lap8
Must be used with backer plate	
Max Speed:	2,000rpm
36 grit	\$26.50
60 grit	24.50
80 grit	24.50
120 grit	24.00
180 grit	24.00
260 grit	24.00
360 grit	24.00
600 grit	24.00
1200 grit	24.00
3000 grit	24.00



6" Diamond Lap	~1mm Thick
1/2" Hole, Part #	Lap6
Must be used with backer plate	
Max Speed:	2,000rpm
36 grit	\$17.00
60 grit	15.50
80 grit	15.50
120 grit	15.00
180 grit	15.00
260 grit	15.00
360 grit	15.00
600 grit	15.00
1200 grit	15.00
3000 grit	15.00

Diamond Powder, Paste & Felt Bobs

High quality diamond abrasives and felt bobs



Diamond Paste	5 grams
Part Number	DPaste5gr
11 Syringe Set	\$44.00
120 grit	4.50
220 grit	4.50
325 grit	4.50
600 grit	4.50
1200 grit	4.50
3000 grit	4.50
8000 grit	4.50
14000 grit	4.50
20000 grit	4.50
50000 grit	4.50
100000 grit	4.50



Dia Powder	100cts
Part Number	DPowder100ct
36 grit	\$29.00
75 grit	25.00
150 grit	25.00
300 grit	25.00
600 grit	25.00
1200 grit	25.00
3000 grit	25.00
8000 grit	25.00
20000 grit	25.00
50000 grit	25.00
100000 grit	25.00

Felt Bobs

For use with Diamond Paste and Oxides



Hard Felt Cyl	3.5" Diameter
Part Number	CylBob3.5
Max Speed:	1,000rpm
	\$29.00



Hard Felt Cyl	2" Diameter
Part Number	CylBob1.5
Max Speed:	1,000rpm
	\$15.50



Hard Felt Ball	1.5" Diameter
Part Number	BallBob1.5
Max Speed:	1,000rpm
	\$19.50



Felt Bob Set	3pc, Hard Felt
Part Number	VBobSet
Max Speed:	1,000rpm
	\$8.50



Felt Bob Set	5pc Hard Felt
Part Number	BobSet5pc
Max Speed:	1,000rpm
	\$11.00



Felt Bob Set	10pc Hard Felt
Part Number	BobSet10pc
Max Speed:	1,000rpm
	\$17.00

Diamond Pads & Diamond Cloth

With hook and loop backing



Diamond Pads	2" Diameter
With Hook and	Loop Backing
Part Number	FlatPad2
Max Speed:	3,700rpm
60 grit	\$18.00
80 grit	17.40
120 grit	15.50
220 grit	15.00
400 grit	15.00
600 grit	15.00
1200 grit	16.00
Set of 7	\$95.00



Diamond Cloth	11-1/2" x 4"
Part Number	DiaCloth
Durable Backing	
120 grit	\$135.00
220 grit	130.00
400 grit	125.00
600 grit	125.00
1200 grit	125.00

Diamond Belts & Paper, SC Belts, Drums

Expandible drums and silicon carbide belts for the stone, tile and wood working industries

High quality diamond paper and belts



Pneumatic Drum	Set of 3, 3/8" Shaft
Part Number	DrumSetPn
Max 17psi 9000rpm	1-3/4"D x 2-1/2"
Max 7psi 7000rpm	2-1/2"D x 3-5/8"
Max 15psi 5000rpm	3-3/4"D x 5-3/8"
Set:	\$119.00



Silicon Carbide	Belts
Part Number	SCBeltsDrum
80g, 120g, 220g	400g & 600 grit
Max Speed:	9,000rpm
1-3/4"D x 2-1/2"	\$1.25
Max Speed:	7,000rpm
2-1/2"D x 3-5/8"	\$2.25
Max Speed:	5,000rpm
3-3/4"D x 5-3/8"	\$3.25

Silicon Carbide Blocks

High quality silicon carbide blocks

Soft binder blocks conform to the curve of the carving after a few strokes.



Silicon Carbide	Blocks
Part Number	SCBlocksSmS
Soft Binder	6"x1/2"x1/4"
220 grit	\$6.50
400 grit	6.50
600 grit	6.50
1200 grit	6.50
Set of four grits:	\$23.00

Silicon Carbide	Blocks
Part Number	SCBlocksSmH
Hard Binder	6"x1/2"x1/4"
220 grit	\$6.50
400 grit	6.50
600 grit	6.50
1200 grit	6.50
Set of four grits:	\$23.00



Silicon Carbide	Blocks
Part Number	SCBlocksLgS
Soft Binder	6"x1"x1/2"
220 grit	\$9.50
400 grit	9.50
600 grit	9.50
1200 grit	9.50
Set of four grits:	\$34.00

Silicon Carbide	Blocks
Part Number	SCBlocksLgH
Hard Binder	6"x1"x1/2"
220 grit	\$9.50
400 grit	9.50
600 grit	9.50
1200 grit	9.50
Set of four grits:	\$34.00

Application Tips For Silicon Carbide Blocks:

Soft Binder Applications and Tips:

- *Take out tool marks and scratches.
- *Smooth curves in pendants and carvings.
- *After several long strokes the silicon carbide block will conform to the curve of the stone.
- *Use long strokes to maintain smooth curves.

Hard Binder Applications and Tips:

- *Use to define lines in pendants and carvings.
- *Sharpen knives.

Use a trim saw to create custom shapes to get into tight areas.

Use a little water to maintain a slurry.

NSK Micromotor

We are an authorized dealer for NSK



NSK MicroMotor Kit	Espt 500 Torque
List Price	\$1,855.00
Your Price	Call Us

For years have sold the NSK Espt 500 Torque Set to professional jade carvers around the world. The Espt 500 precision hand piece can be balanced on one finger at 50,000 rpm. The motor is in the hand piece so there is no rotating shaft in the cable leading to the hand piece. Consequently there is very little vibration in the hand piece and the cable does not torque the wrist when using the hand piece. One can work for hours with this hand piece performing highly detailed work and not come away with a sore hand due to torque and vibration issues.

Attachment



Speed Reducer



Motor



Control Unit



Foredom Tools

Visit www.foredom.net to view all of Foredom's products

We are a Master Distributor for Foredom. If a Foredom product is not in stock we can have it drop-shipped directly to you from Foredom. Call or email us for items not listed below.



Jeweler's Kit	
Part Number	K.2230
List Price	\$351.52
Your Price	\$282.00



Carving Kit	
Part Number	KTX.300
List Price	\$432.64
Your Price	\$346.00



Drill Press	
Part Number	P-DP30
List Price	\$175.76
Your Price	\$144.00



Angle Grinder	With H.30 Handpiece
Part Number	AK69130
List Price	\$182.00
Your Price	\$149.00



Grinder Head	w/o Handpiece
Part Number	AK69110
List Price	\$124.80
Your Price	\$109.00



Filter Hood	
Part Number	MAFH25
List Price	\$310.96
Your Price	\$259.00

Grinding, Polishing and Safety Tips

Stone Grinding Tips:

Remove material with coarse grits and then use successive finer grits to prepare for the polishing stages.

For example use 80 or 120 grit to remove excess material. Note that 600 grit tools are designed to remove 400 grit scratches, 400 grit tools are designed to remove 220 grit scratches, 220 grit tools are designed to remove 120 grit scratches. Skipping a grit will cause the finer grits to wear out prematurely. Trying to remove material with a 400 or 600 grit plated burr will result in wearing out the tool in minutes. However one *can* remove material with 220, 400 and 600 grit sintered burrs.

Note that 80 and 120 grit tools may not appropriate for some fragile or brittle stones like opals, crystals and glass.

Stone Polishing Tips:

Do some research on the type of stone you are polishing.

After finishing with 600 grit diamond tools some stones can be polished in one step with tin oxide, chrome oxide, Linde A or other polishing compounds.

Many hard stones can be polished by using the sequence of 600, 1200, 3000, 8000, 20000, 50000 grit diamond paste on felt bobs.

Micromotor Safety Tips:

The NSK Micromotor has such a high torque capability that it can bend burrs in half. This can cause serious injury and it can also cause damage to the handpiece. Some of the things that can cause this to happen:

- *The micromotor is started at high speeds (start the micromotor at lowest speed setting).
- *The burr is too long or is not seated all the way into the collet.
- *The micromotor is being used with a burr beyond the burrs speed rating.
- *The burr head has too much mass for the speed being used.

General Safety Tips:

- *Wear eye, face and body protection when using any power tool to prevent serious injuries.
- *Use a respirator or dust collection system to prevent inhaling dust, abrasives, grinding or polishing compounds or other debris into your sinuses and lungs.
- *Use ear protection when operating motorized devices.
- *Stay within manufacturers speed ratings for rotary tools.
- *When using high speed devices such as micromotors, turn the device on at a low speed and then adjust to the desired operating speed. Failure to do so may result in damage to the equipment and or personal injury.

Copyright Information:

All rights are reserved. This entire catalog is copyrighted including all pictures and text. This catalog may be copied in its entirety only, and used in its entirety only, for the purpose of purchasing products from us. Any other use is prohibited unless permission has been granted in writing from David R. Clayton.