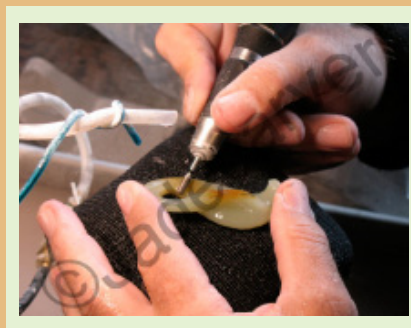


Jadecarver.com

2016 Tool Catalog

Rev 4



Diamond Tools
Diamond Abrasives
Micromotors
Silicon Carbide Tools

**Tools for the Lapidary, Jewelry,
Glass, Stone & Welding Trades**

Welcome to the Jadecarver.com Tools Catalog

Our Products:

We are jade carvers and use the products we sell. Many of our products are custom made for us by our factories in the USA, China, Canada and Europe. Our factories make some of these tools to our specifications from our custom CAD drawings which is why many of our tools are unique. Contact us for information regarding custom tool designs.

We reserve the right to vary the specifications and dimensions of our products without notice.

Ordering, Shipping and Payment Information:

Note that the prices and specifications in this catalog are subject to change without notice.

We ship internationally.

Please call or email us with your order and we will provide you with shipping costs while you are on the phone. Shipping is primarily via US Postal Service Priority Mail however we can use FedEx or UPS as needed.

Accepted methods of payment: Visa, Mastercard and PayPal. Contact us for additional payment options.

Returns:

Most items may be returned within 7 days of your receiving the product as long as the item has not been installed or used and is returned in its new original packaging. Items that are not returnable are: special orders, motorized devices, diamond paste and diamond powder.

Your satisfaction is important to us. Should you encounter a problem with any of our products please contact us.

Caution: Safety Issues:

Always wear eye and face and body protection when using any power tool to prevent serious injuries.

Always use a respirator or dust collection system to prevent inhaling dust, abrasives, grinding and polishing compounds or other debris into your lungs.

Use ear protection when operating motorized devices.

Stay within manufacturers speed ratings for rotary tools.

When using high speed devices such as micromotors, turn the device on at a low speed and then adjust to the desired operating speed. Failure to do so may result in damage to the equipment and/or personal injury.

Shows:

See us in person at gem and mineral shows. Refer to our web site for show dates.

Visit us in Room 122 at the Pueblo Gem Show January 29th through February 10th, 2016 at the River Park Inn, Tucson, Arizona.

Contact Information:

Gems & Jade
P.O. Box 1213
Concord, California 94522 USA
Telephone: (925) 689-8840
International: 001-925-689-8840
Email: jadecarver@jadecarver.com

Thank you for using our products,

David R. Clayton

Owner and Jadecarver



Diamond Tool Product Index

Welcome	Page 2
Flat Grinding Wheels.....	Page 4
V Grinding Wheels.....	Page 5
Convex Grinding Wheels	Page 6
Concave Grinding Wheels	Page 7
Bushings for Grinding Wheels	Page 7
Burr Sets.....	Pages 8 & 9
Burrs	Pages 10, 11 & 12
Burrs, Sintered	Page 13
Drills, Nickel Plated	Page 14
Drills, Sintered	Page 15
Saw Blades.....	Page 16
File Sets	Page 17
Flat Laps.....	Page 18
Diamond Powder.....	Page 19
Diamond Paste.....	Page 19
Felt Bobs	Page 19
2" & 4" Diamond Pads for Angle Grinders.....	Page 20
4" Felt Pads for Angle Grinders.....	Page 20
3" & 4" Backer Pads for Angle Grinders	Page 20
4" Grinding Wheels for Angle Grinders	Page 21
Expandable Drums.....	Page 22
Silicon Carbide Belts	Page 22
Diamond Paper	Page 22
Silicon Carbide Blocks.....	Page 23
NSK Micromotor	Page 24
Foredom Flex Shaft Motors and Accessories.....	Page 25
Grinding, Polishing and Safety Tips	Page 26

Flat Diamond Grinding Wheels

High quality nickel plated diamond grinding wheels

These wheels have a 1 inch hole. Bushings are available to adapt the wheels to 1/2", 5/8" and 3/4" arbors. Please specify when you order if you need bushings (see page 7).



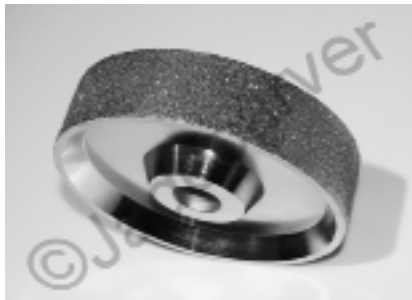
8"x1-1/2"	Composite, Flat
Part Number	8x1.5CFlat
Max Speed:	2,400rpm
60 grit	\$135.00
80 grit	135.00
120 grit	130.00
220 grit	115.00
400 grit	115.00
600 grit	115.00



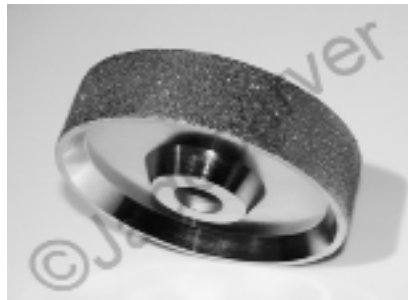
6"x1-1/2"	Composite, Flat
Part Number	6x1.5CFlat
Max Speed:	2,400rpm
60 grit	\$115.00
80 grit	112.00
120 grit	98.00
220 grit	95.00
400 grit	95.00
600 grit	95.00



4"x1-1/2"	Composite, Flat
Part Number	4x1.5CFlat
Max Speed:	2,400rpm
60 grit	\$59.00
80 grit	48.00
120 grit	46.00
220 grit	45.00
400 grit	45.00
600 grit	45.00



8"x1-1/2"	Steel Core, Flat
Part Number	8x1.5SFlat
Max Speed:	2,400rpm
36 grit	\$145.00
80 grit	135.00



6"x1-1/2"	Steel Core, Flat
Part Number	6x1.5SFlat
Max Speed:	2,400rpm
36 grit	\$125.00
60 grit	115.00
80 grit	112.00
120 grit	98.00
220 grit	95.00
400 grit	95.00
600 grit	95.00

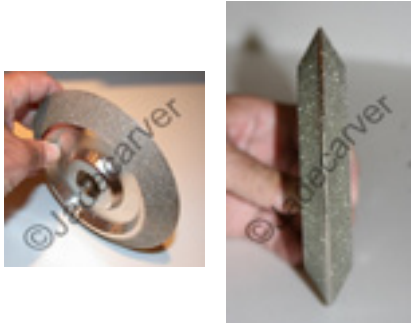


6"x1"	Steel Core, Flat
Part Number	6x1SFlat
Max Speed:	2,400rpm
60 grit	\$59.00
80 grit	55.00
120 grit	53.00
220 grit	52.00
400 grit	52.00
600 grit	52.00

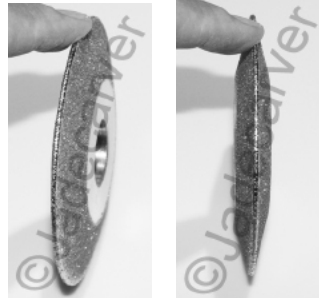
V Diamond Grinding Wheels

High quality nickel plated diamond grinding wheels

These wheels have a 1 inch hole. Bushings are available to adapt the wheels to 1/2", 5/8" and 3/4" arbors. Please specify when you order if you need bushings (see page 7).



6"x1", Steel	60 Degree V
Part Number	6x1SV
Max Speed:	2,400rpm
50 grit	\$69.00
80 grit	59.00
120 grit	56.00
220 grit	56.00
400 grit	56.00
600 grit	56.00



4"x1/2", Steel	30 Degree V
Part Number	4x.5SV
Max Speed:	2,400rpm
80 grit	\$47.00
120 grit	42.00
220 grit	35.00
400 grit	35.00
600 grit	35.00

Convex Diamond Grinding Wheels

High quality nickel plated diamond grinding wheels

These wheels have a 1 inch hole. Bushings are available to adapt the wheels to 1/2", 5/8" and 3/4" arbors. Please specify when you order if you need bushings (see page 7).



6"x1-1/2"	Convex
Part Number	6x1.5SVex
Max Speed:	2,400rpm
80 grit	\$95.00
120 grit	89.00
220 grit	85.00
400 grit	85.00
600 grit	85.00



6"x1/4"	Convex
Part Number	6x.25SVex
Max Speed:	2,400rpm
50 grit	\$48.00
80 grit	45.00
120 grit	39.00
220 grit	38.00
400 grit	38.00
600 grit	38.00



6"x1"	Convex
Part Number	6x1SVex
Max Speed:	2,400rpm
50 grit	\$75.00
80 grit	72.00
120 grit	69.00
220 grit	65.00
400 grit	65.00
600 grit	65.00



4"x1/2"	Convex
Part Number	4x.5SVex
Max Speed:	2,400rpm
80 grit	\$39.00
120 grit	37.00
220 grit	35.00
400 grit	35.00
600 grit	35.00



6"x1/2"	Convex
Part Number	6x.5SVex
Max Speed:	2,400rpm
50 grit	\$53.00
80 grit	52.00
120 grit	49.00
220 grit	45.00
400 grit	45.00
600 grit	45.00



4"x1/4"	Convex
Part Number	4x.25SVex
Max Speed:	2,400rpm
80 grit	\$29.00
120 grit	27.00
220 grit	25.00
400 grit	25.00
600 grit	25.00

Concave Diamond Grinding Wheels

High quality nickel plated diamond grinding wheels

These wheels have a 1 inch hole. Bushings are available to adapt the wheels to 1/2", 5/8" and 3/4" arbors. Please specify when you order if you need bushings (see below).



6"x1-1/2"	Concave
Part Number	6x1.5SCave
Max Speed:	2,400rpm
80 grit	\$95.00
120 grit	89.00
220 grit	85.00
400 grit	85.00
600 grit	85.00



6"x1"	Concave
Part Number	6x1SCave
Max Speed:	2,400rpm
80 grit	\$72.00
120 grit	69.00
220 grit	65.00
400 grit	65.00
600 grit	65.00



Bushings	
Part Number	Bushing
1/2 inch wide *	\$1.50
3/4 inch wide **	1.50
1 inch wide	1.50

The outside diameter of the bushings are 1 inch and fit all of our wheels. All bushings telescope to fit 1/2", 5/8" or 3/4" arbors.

*For 1/4" wide wheels use a 1/2" bushing and grind it down to 1/4".

**Use 2 of the 3/4 inch bushings for diamond wheels that are 1-1/2" wide.

Diamond Burr Sets

High quality nickel plated diamond burrs



50pc Set, Lg	1/8" Shaft
Part Number	BS50pcL
Max Speed:	35,000rpm
36 grit	\$36.00
80 grit	30.00
120 grit	28.00
220 grit	28.00
400 grit	28.00
600 grit	28.00



50pc Set, Sm	1/8" Shaft
Part Number	BS50pcS
Max Speed:	40,000rpm
36 grit	23.00
80 grit	19.00
120 grit	19.00
220 grit	19.00
400 grit	19.00
600 grit	19.00



30pc Set	1/8" Shaft
Part Number	BS30pc
Max Speed:	40,000rpm
36 grit	\$14.00
80 grit	12.00
120 grit	12.00
220 grit	12.00
400 grit	12.00
600 grit	12.00



Sphere Set	1/8" Shaft
2mm - 15mm	14pc Set
Part Number	BBS14pc
Max Speed:	40,000rpm
36 grit	\$28.00
80 grit	25.00
120 grit	25.00
220 grit	25.00
400 grit	25.00
600 grit	25.00



20pc Large Set	1/4" Shaft
Part Number	LBS20pc
Max Speed:	5,000rpm
36 grit	\$29.00
80 grit	28.00
120 grit	28.00
220 grit	28.00
400 grit	28.00
600 grit	28.00

Diamond Burr Sets

High quality nickel plated diamond burrs



V Burr Set	1/8" Shaft
19mm OD	3pc Set
Part Number	VBS3pc
Max Speed:	16,000rpm
80 grit	\$21.00
120 grit	21.00
220 grit	21.00
400 grit	21.00



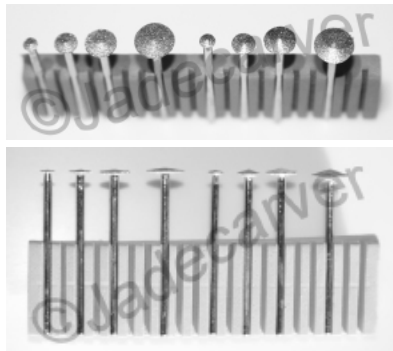
Cup Set, Med	1/8" Shaft
10-15mm, OD	6pc Set
Part Number	CupBSM6pc
Max Speed:	18,000rpm
120 grit	\$23.00
220 grit	23.00
400 grit	23.00



Cup Set, Small	1/8" Shaft
2-10mm, OD	9pc Set
Part Number	CupBSS9pc
Max Speed:	18,000rpm
120 grit	\$19.00
220 grit	19.00
400 grit	19.00



Radius Burr Set	1/8" Shaft
To Radius Holes	4pc Set
Part Number	RadiusBS
Max Speed:	18,000rpm
80 grit	\$18.00
120 grit	18.00
220 grit	18.00
400 grit	18.00



V Burr Set	3/32" Shaft
4, 6, 8, 10mm OD	8pc Set
Part Number	VBS8pc
Max Speed:	18,000rpm
120 grit	22.00
220 grit	22.00
400 grit	22.00

Diamond Burrs

High quality nickel plated diamond burrs



Tire Burr	1/4" Shaft
1.5" D x 1/2"W	38mm x 13mm
Part Number	TB38X13
Max Speed:	18,000rpm
36 grit	\$33.00
80 grit	30.00
120 grit	29.00
220 grit	28.00
400 grit	28.00
600 grit	28.00



Tire Burr	1/4" Shaft
1.5"D x 1/4"W	38mm x 6mm
Part Number	TB38X6
Max Speed:	18,000rpm
36 grit	\$29.00
80 grit	27.00
120 grit	26.00
220 grit	25.00
400 grit	25.00
600 grit	25.00



Diamond Resin Tire Burr	1/4" Shaft
1.5"D x 1/4"W	38mm x 6mm
Part Number	RTB38X6
Max Speed:	5,000rpm
600 grit	\$27.00
1200 grit	27.00
3000 grit	27.00
8000 grit	27.00
15000 grit	27.00



Tire Burr	1/8" Shaft
1"Diameter	25mm Dia
Part Number	TB25
Max Speed:	18,000rpm
36 grit	\$18.00
80 grit	16.00
120 grit	16.00
220 grit	16.00
400 grit	16.00
600 grit	16.00



1/2 Sphere Burr	1/8" Shaft
3/4" Diameter	20mm Dia
Part Number	HSB20
Max Speed:	18,000rpm
36 grit	\$18.00
80 grit	16.00
120 grit	16.00
220 grit	16.00
400 grit	16.00
600 grit	16.00



1/2 Sphere Burr	1/4" Shaft
1.5" Diameter	38mm Dia
Part Number	HSB38
Max Speed:	18,000rpm
36 grit	\$34.00
80 grit	30.00
120 grit	25.00
220 grit	25.00
400 grit	25.00
600 grit	25.00

Diamond Burrs

High quality nickel plated diamond burrs



Carver Burrs	1/4" Shaft
40/50 grit	
Part Number	CarverB
Max Speed:	15,000rpm
3/4" Diameter	\$6.50
1" Diameter	8.00
1-1/2" Diameter	12.00
2" Diameter	15.00
3" Diameter	22.00



Cone Burr	1/4" Shaft
~3/4" Diameter	19mm Dia
Part Number	ConeB19
Max Speed:	18,000rpm
36 grit	\$20.00
80 grit	18.00
120 grit	18.00
220 grit	18.00
400 grit	18.00
600 grit	18.00



Ball Burr	1/8 or 1/4" Shaft
1" Diameter	25mm Dia
Part Number	25BB
Max Speed:	18,000rpm
36 grit	\$25.00
80 grit	23.00
120 grit	23.00
220 grit	23.00
400 grit	23.00
600 grit	23.00



Ball Burr	1/4" Shaft
1-1/2"	38mm Dia
Part Number	38BB
Max Speed:	18,000rpm
36 grit	\$30.00
80 grit	28.00
120 grit	28.00
220 grit	28.00
400 grit	28.00
600 grit	28.00

Diamond Burrs

High quality nickel plated diamond burrs



R Drum Burr	1/4" Shaft
1" Diameter	OL = 4-1/2"
Part Number	DrumBR
Max Speed:	18,000rpm
36 grit	\$38.00
80 grit	35.00
120 grit	32.00
220 grit	31.00
400 grit	31.00
600 grit	31.00



Drum Burr	1/4" Shaft
1" Diameter	OL = 4-1/2"
Part Number	DrumB
Max Speed:	18,000rpm
36 grit	\$36.00
80 grit	31.00
120 grit	29.00
220 grit	28.00
400 grit	28.00
600 grit	28.00



Star Burr	1/4" Shaft
3/4" Diameter	20mm Dia
Part Number	StarB
Max Speed:	18,000rpm
80 grit	\$19.50
120 grit	19.50
220 grit	19.50
400 grit	19.50



Hourglass Burr	1/8" Shaft
12mm Dia	14mm Long
Part Number	12HGB
Max Speed:	18,000rpm
36 grit	\$18.00
80 grit	16.00
120 grit	16.00
220 grit	16.00
400 grit	16.00
600 grit	16.00

Sintered Diamond Burrs

High quality sintered diamond burrs



Sintered Burrs	3/32" Shaft
Part Number	Call
Max Speed:	
.016 to .050:	30,000rpm
1.6 to 5mm	\$28.00
Larger than 5mm	Call

Our experience using Varankor sintered burrs is that they last more than 20 time longer than plated burrs when used on jade. Sintered burr have diamond embedded in the heads all the way through to the shaft.

Professionals usually have a full set of sintered burrs of their favorite shapes in their tool kit. Hobbyists start out with a few sintered burrs of the shapes they use the most and gradually increase their collection over time.

We realize you cannot read the part numbers on the chart. We could not fit a legible chart in the format of this catalog however we did want our customers to see that we do stock these burrs.

In a future revision of the catalog we will create a new sintered burrs page that is more user friendly. We did not want to hold off releasing this catalog until we created the new page.

If you are interested in purchasing sintered burrs please call or send us an email. Upon request we can email a larger pdf file from which you can see more detail and read the part numbers.

Thank you for understanding,

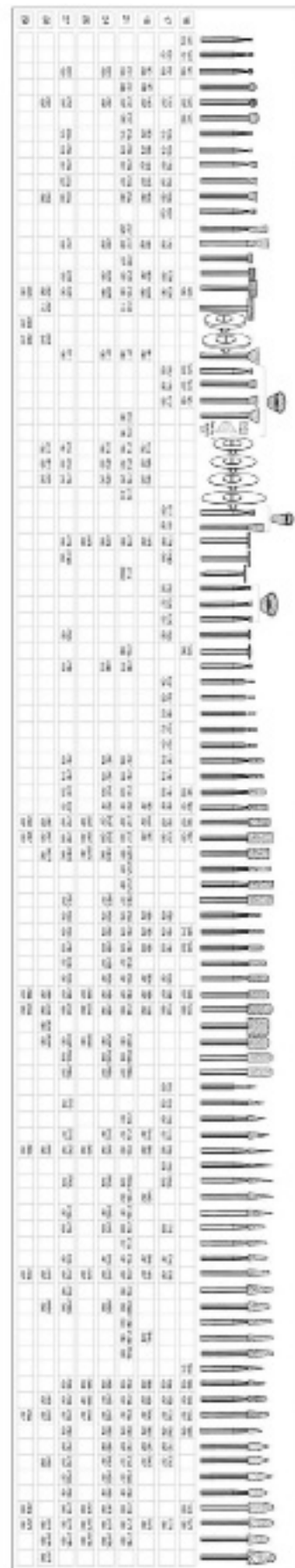
~David Clayton

Part Number	Color	Size
101	Blue	1.5mm
102	Blue	2.0mm
103	Blue	2.5mm
104	Blue	3.0mm
105	Blue	3.5mm
106	Blue	4.0mm
107	Blue	4.5mm
108	Blue	5.0mm

Order Number: 101
Charting & Listing
 101-108 (10mm Shaft)
 109-116 (15mm Shaft)
 117-124 (20mm Shaft)
 www.jadecarver.com



CAUTION
 Maximum operating speed:
 1/16" Dia = 30,000 RPM (30,000 rpm)
 1/8" Dia = 15,000 RPM
 3/16" Dia = 10,000 RPM
 1/4" Dia = 7,500 RPM



Varankor

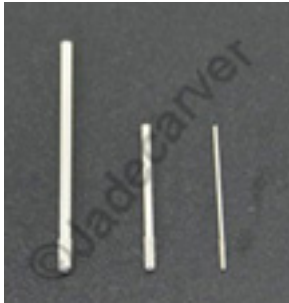
Solid Sintered Diamond Bur Collection

www.jadecarver.com (925) 689-8840

Varankor

Plated Diamond Drills

High quality nickel plated diamond drills



Solid Drills	Package of 25
Part Number	25pcDrill
Max Speed:	18,000rpm
.75mm Dia	\$24.90
1.0mm Dia	24.90
1.25mm Dia	27.90
1.5mm Dia	28.90
2.0mm Dia	29.90

Solid Drills	Package of 100
Part Number	100pcDrill
Max Speed:	18,000rpm
.75mm Dia	\$79.50
1.0mm Dia	82.50
1.25mm Dia	92.50
1.5mm Dia	93.50
2.0mm Dia	94.50



Core Drills	Straight Shaft
Part Number	CD
Max Speed:	2,000rpm
2.5mm	\$2.25
3mm	2.75
4mm	3.50
6mm, ~1/4"	5.50
8mm	7.50
10mm	9.50



Brazed Drills	1/4" Shaft
Part Number	BCD
Max Speed:	1,000rpm
38mm, ~1-1/2"	32.00
Max Speed:	1,000rpm
51mm, ~2"	45.00
Max Speed:	800rpm
63mm, ~2-1/2"	55.00
Max Speed:	800rpm
76mm, ~3"	65.00



Core Drills	1/4" Shaft
Part Number	CD
Max Speed:	1,800rpm
13mm, ~1/4"	\$12.50
Max Speed:	1,600rpm
16mm, ~5/8"	14.50
Max Speed:	1,500rpm
19mm, ~3/4"	16.50
Max Speed:	1,200rpm
25mm, ~1"	22.00
Max Speed:	1,100rpm
32mm	25.00
Max Speed:	1,000rpm
38mm	28.00
Max Speed:	1,000rpm
50mm, ~2"	38.00



Drill Set	1/8" Shaft
3mm - 10mm	8pc Set
Part Number	DrillSet8pc
Max Speed:	2,000rpm
Set	\$25.00

Sintered Diamond Drills

High quality sintered diamond core drills have diamond imbedded throughout the bronze, resulting in drills that last more than 4 times longer than plated drills.



Core Drills	1/8" Shaft
Part Number	SCD6mm
Max Speed:	2,000rpm
6mm, ~1/4"	\$9.50



Core Drills	1/4" Shaft
Part Number	SCD
Max Speed:	1,800rpm
13mm, ~1/2"	\$17.50
Max Speed:	1,500rpm
19mm, ~3/4"	25.00
Max Speed:	1,100rpm
25mm, ~1"	36.00
Max Speed:	1,000rpm
38mm, ~1-1/2"	50.00
Max Speed:	1,000rpm
51mm, ~2"	68.00



Core Drill, Long	1/2" Shaft
Overall Length:	180mm
Part Number	LSCD
Max Speed:	1,800rpm
13mm, ~1/2"	\$28.00
Max Speed:	1,600rpm
16mm, ~5/8"	31.00
Max Speed:	1,500rpm
19mm, ~3/4"	34.00
Max Speed:	1,100rpm
25mm, ~1"	45.00
Max Speed:	1,000rpm
38mm, ~1-1/2"	65.00
Max Speed:	1,000rpm
51mm, ~2"	88.00
Max Speed:	950rpm
63mm, ~2-1/2"	94.00
Max Speed:	900rpm
76mm, ~3"	124.00
Max Speed:	850rpm
89mm, ~3-1/2"	137.00
Max Speed:	800rpm
101mm, ~4"	149.00

Saw Blades

High quality nickel plated and sintered diamond saw blades



Saw Blade	1/2"/5/8"/7/8" Hole
Sintered	
Part Number	SawBladeS
Max Speed:	9,000rpm
4" Dia x .07	\$15.00
Max Speed:	7,200rpm
5" Dia x .075	18.00
Max Speed:	6,000rpm
6" Dia x .075	21.00
Max Speed:	5,000rpm
7" Dia x .087	24.00
Max Speed:	4,500rpm
8" Dia x .094	29.00
Max Speed:	3,500rpm
10" Dia x .12	49.00



Saw Blade	1/8" Shaft
Plated	
Part Number	SawBlade
Max Speed:	900rpm
1" Diameter	\$5.00
2" Diameter	10.00

Diamond Files

High quality nickel plated diamond files and reamers



Straight File Set	
10pc Set	5.5" Long
Part Number	SFS10pc
80 grit	\$11.00
120 grit	11.00
220 grit	11.00
400 grit	11.00



Riffer File Set	
10pc Set	5.5" Long
Part Number	RFS10pc
80 grit	\$13.00
120 grit	13.00
220 grit	13.00
400 grit	13.00



Straight File Set	
5pc Set	8.5" Long
Part Number	SFS5pc
80 grit	\$16.00
120 grit	16.00
220 grit	16.00
400 grit	16.00

Diamond Flat Laps

High quality nickel plated 1mm thick solid steel diamond flat laps with a 1/2" hole



8" Diamond Lap	~1mm Thick
1/2" Hole, Part #	Lap8
Must be used with backer plate	
Max Speed:	2,000rpm
60 grit	\$18.00
80 grit	18.00
120 grit	18.00
180 grit	18.00
260 grit	18.00
360 grit	18.00
600 grit	18.00
1200 grit	18.00
3000 grit	18.00



6" Diamond Lap	~1mm Thick
1/2" Hole, Part #	Lap6
Must be used with backer plate	
Max Speed:	2,000rpm
60 grit	\$12.00
80 grit	12.00
120 grit	12.00
180 grit	12.00
260 grit	12.00
360 grit	12.00
600 grit	12.00
1200 grit	12.00
3000 grit	12.00

Diamond Powder, Paste & Felt Bobs

High quality diamond abrasives and felt bobs



Diamond Paste	5 grams
Part Number	DPaste5gr
11 Syringe Set	\$35.75
120 grit	4.00
220 grit	4.00
325 grit	4.00
600 grit	4.00
1200 grit	4.00
3000 grit	4.00
8000 grit	4.00
14000 grit	4.00
20000 grit	4.00
50000 grit	4.00
100000 grit	4.50



Felt Bob Set	1/8" Shaft
Part Number	BobSet14
Max Speed:	15,000rpm
14pc Set	\$16.00



Dia Powder	100cts
Part Number	DPowder100ct
36 grit	\$50.00
75 grit	50.00
150 grit	50.00
300 grit	50.00
600 grit	50.00
1200 grit	50.00
3000 grit	50.00
8000 grit	50.00
20000 grit	50.00
50000 grit	50.00
100000 grit	65.00



Felt Bob, 3-1/2"	1/4" Shaft
Part Number	Bob3.5
Max Speed:	12,000rpm
Felt Bob	\$29.00



Felt Bob, 2" Dia	1/8" Shaft
Part Number	Bob2
Max Speed:	10,000rpm
Felt Bob	\$15.00

Angle Grinder Tools

High quality angle grinder tools for the stone and tile industry

Note: All items on this page have velcro type backs

Note: Use diamond paste or oxides with the 4" felt pad listed below



Diamond Pads	
4" Diameter	Flat
Part Number	FlatPad4
Max Speed:	3,700rpm
30 grit	\$16.00
60 grit	16.00
150 grit	16.00
300 grit	16.00
500 grit	16.00
1000 grit	16.00
3000 grit	16.00
Buff	16.00
Set of 8	115.00



Felt Pad	
Part Number	FeltPad4
Max Speed:	3,700rpm
4" Diameter	\$12.00



Diamond Pads	
4" Diameter	Convex
Part Number	VexPad4
Max Speed:	3,700rpm
50 grit	\$23.50
100 grit	23.50
200 grit	23.50
400 grit	23.50
800 grit	23.50
1500 grit	23.50
3000 grit	23.50
Set of 7	155.00



Backer Pads	
Part Number	BackerPad
Max Speed:	3,700rpm
2" Diameter	\$12.00
3" Diameter	\$12.00
4" Diameter	12.00



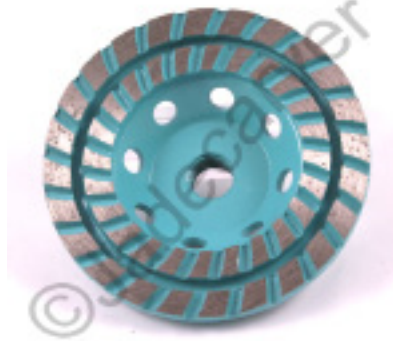
Diamond Pads	2" Diameter
Part Number	FlatPad2
Max Speed:	3,700rpm
60 grit	\$17.00
80 grit	16.00
120 grit	15.50
220 grit	15.00
400 grit	15.00
600 grit	15.00
Set of 6	\$78.00

Angle Grinder Tools

High quality angle grinder tools for the stone and tile industry



Turbo Wheel	Sintered
4" Diameter	5/8"-11 Threads
Part Number	AGTurbo
Max Speed:	11,000rpm
50/60 grit	\$45.00



Dbl Row Wheel	Sintered
4" Diameter	5/8"-11 Threads
Part Number	AGTurboDR
Max Speed:	11,000rpm
50/60 grit	\$45.00



Dbl Row Wheel	Sintered
4" Diameter	5/8"-11 Threads
Part Number	AGSegment
Max Speed:	11,000rpm
50/60 grit	\$45.00

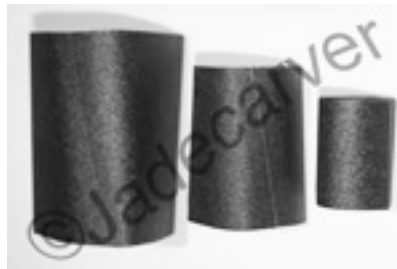
Diamond Belts & Paper, SC Belts, Drums

Expandible drums and silicon carbide belts for the stone, tile and wood working industries

High quality diamond paper and belts



Pneumatic Drum	Set of 3, 3/8" Shaft
Part Number	DrumSetPn
Max 17psi 9000rpm	1-3/4"D x 2-1/2"
Max 7psi 7000rpm	2-1/2"D x 3-5/8"
Max 15psi 5000rpm	3-3/4"D x 5-3/8"
Set:	\$109.00



Silicon Carbide	Belts
Part Number	SCBeltsDrum
80g, 120g, 220g	400g & 600 grit
Max Speed:	9,000rpm
1-3/4"D x 2-1/2"	\$1.25
Max Speed:	7,000rpm
2-1/2"D x 3-5/8"	\$2.25
Max Speed:	5,000rpm
3-3/4"D x 5-3/8"	\$3.25



Silicon Carbide	Belts
6"Dia x 2-1/2"	
Part Number	SCBelts6
Max Speed:	18,000rpm
36 grit	\$1.75
80 grit	1.75
120 grit	1.75
220 grit	1.75
400 grit	1.75
600 grit	1.75
10 Belts:	\$1.50 each
30 Belts:	\$1.25 each



Diamond Paper	11-1/2" x 4"
Part Number	DiaPaper
Durable Backing	
80 grit	\$125.00
120 grit	115.00
220 grit	105.00
400 grit	99.00
600 grit	99.00
1200 grit	99.00

Silicon Carbide Blocks

High quality silicon carbide blocks

Soft binder blocks conform to the curve of the carving after a few strokes.



Silicon Carbide	Blocks
Part Number	SCBlocksSmS
Soft Binder	6"x1/2"x1/4"
220 grit	\$5.50
400 grit	5.50
600 grit	5.50
1200 grit	5.50
Set of four grits:	\$19.00

Silicon Carbide	Blocks
Part Number	SCBlocksSmH
Hard Binder	6"x1/2"x1/4"
220 grit	\$5.50
400 grit	5.50
600 grit	5.50
1200 grit	5.50
Set of four grits:	\$19.00



Silicon Carbide	Blocks
Part Number	SCBlocksLgS
Soft Binder	6"x1"x1/2"
220 grit	\$8.50
400 grit	8.50
600 grit	8.50
1200 grit	8.50
Set of four grits:	\$30.00

Silicon Carbide	Blocks
Part Number	SCBlocksLgH
Hard Binder	6"x1"x1/2"
220 grit	\$8.50
400 grit	8.50
600 grit	8.50
1200 grit	8.50
Set of four grits:	\$30.00

Application Tips For Silicon Carbide Blocks:

Soft Binder Applications and Tips:

- *Take out tool marks and scratches.
- *Smooth curves in pendants and carvings.
- *After a few strokes the block will conform to the curve of the stone.
- *Use long strokes to maintain smooth curves.

Hard Binder Applications and Tips:

- *Use to define lines in pendants and carvings.
- *Sharpen knives.

Use a trim saw to create custom shapes to get into tight areas.

Use a little water to create a slurry.

NSK Micromotor

We are an authorized dealer for NSK



NSK MicroMotor Kit	Espert 500 Torque
List Price	\$1,801.00
Your Price	Call Us

For years have sold the NSK Espert 500 Torque Set to professional jade carvers around the world. The Espert 500 precision hand piece can be balanced on one finger at 50,000 rpm. The motor is in the hand piece so there is not a rotating shaft in the cable leading to the hand piece. Consequently there is very little vibration in the hand piece and the cable does not torque the wrist when using the hand piece. One can work for hours with this hand piece performing highly detailed work and not come away with a sore hand due to torque and vibration issues.

Attachment

Ring Type

9090 EHR-500
40,000 min⁻¹ Max. (±2)

Lever Type

1515 EHL-401
40,000 min⁻¹ Max. (±2)

6 mm Torque Type

1552 EHG-400
40,000 min⁻¹ Max. (±1) 30,000 min⁻¹ Max. (±2)

90° Angle Type

1525 EIC-300
40,000 min⁻¹ Max. (±1) 20,000 min⁻¹ Max. (±2)

45° Angle Type

1526 EKC-300
40,000 min⁻¹ Max. (±1) 20,000 min⁻¹ Max. (±2)

90° Angle Torque Type

1551 ERA-270
40,000 min⁻¹ Max. (±1) 20,000 min⁻¹ Max. (±2)

LUSTER (Reciprocating motion)

1516 ELS-100
30,000 min⁻¹ Max. (±1)

MINI-LUSTER (Reciprocating motion)

1554 EML-8
30,000 min⁻¹ Max. (±2)

FINE BELT SANDER

1145 EBS-101
40,000 min⁻¹ Max. (±1) 30,000 min⁻¹ Max. (±2)

Speed Reducer

- 1/4 Speed Reducer

1553	ERG-01B
------	---------

40,000 min⁻¹ Max. (±1) 30,000 min⁻¹ Max. (±2)
May be connected between the motor and the spindle as the need of torque.

Motor

- Compact Motor and Cord

9088	ENK-500C
------	----------

1,000-50,000 min⁻¹

- Torque Motor and Cord

9089	ENK-500T
------	----------

1,000-50,000 min⁻¹

Control Unit

- Espert 500

9793 (120V)	NE96
9794 (230V)	

Foredom Tools

Visit www.foredom.net to view all of Foredom's products

We are a Master Distributor for Foredom. If a Foredom product is not in stock we will have it drop-shipped directly to you from Foredom. Call or email us for items not listed below.



Jeweler's Kit	
Part Number	K.2230
List Price	\$325.00
Your Price	\$259.00



Carving Kit	
Part Number	K.5300
List Price	\$388.00
Your Price	\$310.00



Drill Press	
Part Number	P-DP30
List Price	\$169.00
Your Price	\$135.00



Angle Grinder	With H.30 Handpiece
Part Number	AK69130
List Price	\$172.00
Your Price	\$138.00



Grinder Head	w/o Handpiece
Part Number	AK69110
List Price	\$119.00
Your Price	\$99.00



Filter Hood	
Part Number	MAFH25
List Price	\$295.00
Your Price	\$239.00

Grinding, Polishing and Safety Tips

Stone Grinding Tips:

Remove material with coarse grits and then use successive finer grits to prepare for the polishing stages.

For example use 80 or 120 grit to remove excess material. Note that 600 grit tools are designed to remove 400 grit scratches, 400 grit tools are designed to remove 220 grit scratches, 220 grit tools are designed to remove 120 grit scratches. Skipping a grit will cause the finer grits to wear out prematurely. Trying to remove material with a 400 or 600 grit plated burr will result in wearing out the tool in minutes. However one *can* remove material with 220, 400 and 600 grit sintered burrs.

Note that 80 and 120 grit tools are not appropriate for some stones like opals.

Stone Polishing Tips:

Do some research on the type of stone you are polishing.

After one finishes with 600 grit diamond tools some stones can be polished in one step with tin oxide, chrome oxide, Linde A or other polishing compounds.

Many other stones may be polished by using the sequence of 600, 1200, 3000, 8000, 20000, 50000 grit diamond paste on felt bobs or leather.

Micromotor Operating Tips:

The NSK Micromotor has such a high torque capability that it can bend burrs in half if started at high speeds and/or if the burr is not seated all the way into the collet. This can cause serious injury and it can also cause damage to the handpiece. To prevent this from happening start the micromotor at low speeds and then adjust to the higher speeds as desired within the maximum speed ratings of the burr being used.

We recommend the collet be unscrewed and cleaned with QTips and alcohol after every 12 hours of use. After cleaning the collet, lightly lubricate the outside of the collet with clear general purpose grease. While the collet is removed from the handpiece clean the tip area as well as the exterior of the handpiece.

Periodically use compressed air to lightly blow out the powder and debris around the intake and exhaust ports of the motor on the handpiece. You can use the canned compressed air that is available in office supply stores. Just a couple short blasts will work. Do not use continuous spray as the freezing air can damage the O-rings.

Safety Tips:

Always wear eye, face and body protection when using any power tool to prevent serious injuries.

Always use a respirator or dust collection system to prevent inhaling dust, abrasives, grinding or polishing compounds or other debris into your sinuses and lungs.

Use ear protection when operating motorized devices.

Stay within manufacturers speed ratings for rotary tools.

When using high speed devices such as micromotors, turn the device on at a low speed and then adjust to the desired operating speed. Failure to do so may result in damage to the equipment and or personal injury.

Copyright Information:

All rights are reserved. This entire catalog is copyrighted including all pictures and text. This catalog may be copied in its entirety only, and used in its entirety only, for the purpose of purchasing products from us. Any other use is prohibited unless permission has been granted in writing from David R. Clayton.